

MANTRA™

PRICING & SPECIFICATIONS

May 2022

Supersedes all prior versions

SPEED. SERVICE. QUALITY.

MANTRA™

Your MANTRA™ user experience is our priority. The MANTRA Pricing and Specification Guide features hyperlink navigation, so you can quickly locate product specific to your project.

- The Indexes contain links to each unique product.
- The main Table of Contents contains links to the beginning of each section.
- The secondary Table of Contents at the beginning of each section contains links to product subcategories.
- Return to the beginning of each section by clicking on the title inside the black tab.
- Return to the main Table of Contents at any time by clicking on MANTRA™ Cabinets at the bottom of each page.

If your preferred PDF search method is holding the Control and F keys and populating the search box with item codes or words, we've got you covered.

No matter how you choose to use this resource, we're glad you're specifying MANTRA!

TABLE OF CONTENTS

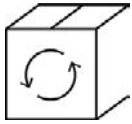
Index by Description	2
Index by Code	3
Customer Experience	4
How To Order Mantra	5
Door Styles	6-8
Product Specifications	9-14
Wall Cabinets	15-36
Base Cabinets	37-49
Universal Design Cabinets	50-57
Tall Cabinets	58-64
Vanity Cabinets	65-69
Fillers	70-72
Skins	73-74
Panels	75-77
Mouldings	78-84
Accessories	85-89
Hinges	90-92

Description	Code	Page	Description	Code	Page
2 Drawer Base	2DB	40	Full Overlay Hinge, 6-way	38CFOHINGE	90
3 Drawer Base	3DB	41	Hinge Angle Restriction Clip	HINGERESCLIP	91
3" Filler	F3_ _, TF396FH	71	Hinge Shim	HINGESHIM5	92
6" Filler	F6_ _, TF696FH	72	Mini Touch-up Kit	MTUK	89
Accent Moulding, Flat Scribe	SM8	80	Partial Overlay Hinge	38NPOHINGE	90
Accent Moulding, Light Baffle	LB2	81	Roll Tray Kits	RT_ _WD	86
Accent Moulding, Small Scribe	SSM8	81	Single Oven 3 Drawers	OC3D33_ _24	64
Angled Corner Sink Front	ACSF	45	Sink Base	SB	43
Angled Corner Sink Front Bottom	ACSF	45	Stain & Paint	QUARTCOLOR, SSC	89
Base and Tall Panels with Filler Attached	BEPF1.5LAM, BEPF3LAM, TEP2496F1.5, TEP3096F1.5	76	Starter Moulding, Shaker	STRS8	80
Base Built-in Microwave Cabinet with Drawer	BBMWD30	42	Straight Valance / Baseboard	VV_ _	84
Base Corner Single Door	BC_ _S	47	Super Lazy Susan	SLS36R	48
Base Double Door	B	39	Tall End Panels	TEP2484LAM, TEP2496LAM, TEP3096LAM	75
Base Double Door - Full Height	B_ _FH	40	Tilt-out Trays	TOT_ _	87
Base Easy Reach	BER_ _R	48	Toeboard	TB8LAM18, TB8LAM14	83
Base End Decorative Door Panel Kit	BEDSD	77	Touch-up Kit	TUK	89
Base Lazy Susan	BLS36R	49	Universal Design, 3 Drawer Base	3DB_ _32.5	53
Base Single Door	B_ _R	38	Universal Design, Base Corner Single Door	BC_ _32.5S	56
Base Single Door - Full Height	B_ _FHR	39	Universal Design, Base Double Door	B_ _32.5	52
Base Sink Removable	BSR	46	Universal Design, Base Single Door	B_ _32.5R	51
Base Wastebasket	BWB	42	Universal Design, Base Sink Removable	BSR_ _32.5	55
Bumper Pads	BUMPERPADS	87	Universal Design, Sink Base	SB_ _32.5	54
Corner Moulding, Inside Corner	ICM8	82	Universal Design, Super Lazy Susan	SLS3632.5R	57
Corner Moulding, Outside Corner	OCM8	82	Utility Double Door	U24_ _24	60
Corner Moulding, Quarter Round	QRM	83	Utility Single Door	U18_ _24R	59
Country Sink Base	CNTYSB	44	Vanity Base Single Door	VB_ _32.521R	66
Crown Moulding, Cove Crown	COVECROWN8	79	Vanity Base Single Door	VB_ _3421R	67
Crown Moulding, Small Cove Crown	SMCOVECROWN8	79	Vanity Drawer Base	VDB_ _32.521	66
Crown Moulding, Solid Wood Crown	SWCRM8	78	Vanity Drawer Base	VDB_ _3421	68
Crown Moulding, Solid Wood Large Crown	SWLCRM8	78	Vanity Sink Base	VSB_ _32.521	67
Diagonal Wall	DW_ _ _ _ _R	35	Vanity Sink Base	VSB_ _3421	68
Diagonal Wall Cut-for-glass	DWCG	36	Vanity Sink Drawer Base	2VSD_ _3421	69
Drawer Guide Kits	DGK_ _PG	88	Wall Corner Double Door	WC_ _ _ _S	32
End Panel Skins	WEPS42LAM14, BEPS34.514, TEP596LAM14	73	Wall Corner Single Door	WC_ _ _ _S	31
Finished Back Skins	BP4834.514, BP4896LAM14	74	Wall Cut-for-glass	WCG	26
Full Overlay Hinge, 4-way	38BFOVHINGE	91	Wall Double Door	W	16
			Wall End Decorative Door Panel Kit	WED	77
			Wall Single Door	W_ _ _ _R	17

Code	Description	Page	Code	Description	Page
2DB	2 Drawer Base	40	OCM8	Corner Moulding, Outside Corner	82
2VSD__3421	Vanity Sink Drawer Base	69	QRM	Corner Moulding, Quarter Round	83
38BFOVHINGE	Full Overlay Hinge, 4-way	91	QUARTCOLOR	Stain & Paint	89
38CFOHINGE	Full Overlay Hinge, 6-way	90	RT__WD	Roll Tray Kits	86
38NPOHINGE	Partial Overlay Hinge	90	SB	Sink Base	43
3DB	3 Drawer Base	41	SB__32.5	Universal Design, Sink Base	54
3DB__32.5	Universal Design, 3 Drawer Base	53	SLS3632.5R	Universal Design, Super Lazy Susan	57
ACSF	Angled Corner Sink Front	45	SLS36R	Super Lazy Susan	48
ACSFb	Angled Corner Sink Front Bottom	45	SM8	Accent Moulding, Flat Scribe	80
B	Base Double Door	39	SMCOVECROWN8	Crown Moulding, Small Cove Crown	79
B__32.5	Universal Design, Base Double Door	52	SSC	Stain & Paint	89
B__32.5R	Universal Design, Base Single Door	51	SSM8	Accent Moulding, Small Scribe	81
B__FH	Base Double Door - Full Height	40	STRS8	Starter Moulding, Shaker	80
B__FHR	Base Single Door - Full Height	39	SWCRM8	Crown Moulding, Solid Wood Crown	78
B__R	Base Single Door	38	SWLCRM8	Crown Moulding, Solid Wood Large Crown	78
BC__32.5S	Universal Design, Base Corner Single Door	56	TB8LAM14	Toeboard	83
BC__S	Base Corner Single Door	47	TB8LAM18	Toeboard	83
BBMWD30	Base Built-in Microwave Cabinet with Drawer	42	TEP2484LAM	Tall End Panel	75
BEDSD	Base End Decorative Door Panel Kit	77	TEP2496F1.5	Tall Panel with Filler Attached	76
BEPF1.5LAM	Base Panel with Filler Attached	76	TEP2496LAM	Tall End Panel	75
BEPF3LAM	Base Panel with Filler Attached	76	TEP3096F1.5	Tall Panel with Filler Attached	76
BEPS34.514	End Panel Skins	73	TEP3096LAM	Tall End Panel	75
BER__R	Base Easy Reach	48	TEPS96LAM14	End Panel Skins	73
BLS36R	Base Lazy Susan	49	TF396FH	3" Filler, Tall	71
BP4834.514	Finished Back Skins	74	TF696FH	6" Filler, Tall	72
BP4896LAM14	Finished Back Skins	74	TOT__	Tilt-out Trays	87
BSR	Base Sink Removable	46	TUK	Touch-up Kit	89
BSR__32.5	Universal Design, Base Sink Removable	55	U18__24R	Utility Single Door	59
BUMPERPADS	Bumper Pads	87	U24__24	Utility Double Door	60
BWB	Base Wastebasket	42	VB__32.521R	Vanity Base Single Door	66
CNTYSB	Country Sink Base	44	VB__3421R	Vanity Base Single Door	67
COVECROWN8	Crown Moulding, Cove Crown	79	VDB__32.521	Vanity Drawer Base	66
DGK__PG	Drawer Guide Kits	88	VDB__3421	Vanity Drawer Base	68
DW_____R	Diagonal Wall	35	VSB__32.521	Vanity Sink Base	67
DWCG	Diagonal Wall Cut-for-glass	36	VSB__3421	Vanity Sink Base	68
F3__	3" Filler	71	VV__	Straight Valance / Baseboard	84
F6__	6" Filler	72	W	Wall Double Door	16
HINGERESCLIP	Hinge Angle Restriction Clip	91	W__R	Wall Single Door	17
HINGESHIMS	Hinge Shim	92	WC_____S	Wall Corner Double Door	32
ICM8	Corner Moulding, Inside Corner	82	WC_____S	Wall Corner Single Door	31
LB2	Accent Moulding, Light Baffle	81	WCG	Wall Cut-for-glass	26
MTUK	Mini Touch-up Kit	89	WED	Wall End Decorative Door Panel Kit	77
OC3D33__24	Single Oven 3 Drawers	64	WEPS42LAM14	End Panel Skins	73

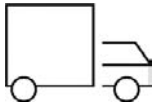
MANTRA™

CABINETS FAST



Cycle Ship

Orders are delivered based on a cycle ship calendar



Truckload

15 business day lead time delivered

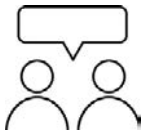
SERVICE MATTERS

As part of the MasterBrand family, we believe our industry leading service will set Mantra apart. This is our pledge to every partner.



Consistent Support

We will be there to help before, during and after the sale.



Personal Support

We will actually listen and work together to support your unique needs.



Proven Commitment

We will use our extensive knowledge and years of experience to help every partner success.

QUALITY ABOVE

We strive to deliver beyond your expectations. That's why popular features like all-plywood construction and soft-close come standard with every Mantra cabinet. Say goodbye to the hassle of upgrades and added costs for your customers.

MANTRA order

All orders will be placed electronically using MBCI1Touch / Mantra Order:

- Electronic entry and order management
- 2020 Design direct order upload

Mantra Order is an easy-to-navigate order management system that enables users to enter, review, edit, copy, and submit orders intuitively.

Electronic orders are picked eight times daily, Monday through Friday (excluding holidays):

- 6:00, 7:30, 8:30, 9:30, and 10:30 AM EST
- 1:00, 2:30, and 3:30 PM EST

★ Order Acknowledgement will be sent the day after order receipt

★ Delivery notification will be sent to dealer once load is assigned

★ Shipments will be delivered Monday through Friday between the hours of 7:00 AM and 4:00 PM local time

Cycle Ship delivery is available in select locations.

- Mantra Cycle Ship cut off is 10:30 AM EST
- See Mantra Cycle Ship schedule on MBCI1Touch

Truckload orders ship in 10-15 business days.

Service Policies are posted on MBCI1Touch.



CLASSIC

Partial Overlay • Shaker • 2 1/4" Rail • Slab drawer front



Bark
Style Code 320
Price Group 1

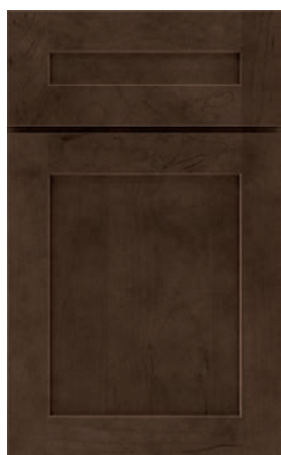


Snow
Style Code 321
Price Group 1



OMNI

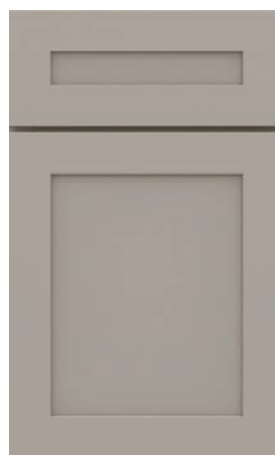
Full Overlay • Shaker • 2 1/4" Rail • 5-piece drawer front



Bark
Style Code 322
Price Group 2
(Available while supplies last)



Graphite
Style Code 328
Price Group 2



Mineral
Style Code 327
Price Group 2



Snow
Style Code 323
Price Group 2



SPECTRA

Full Overlay • Transitional • 3" Rail • 5-piece drawer front

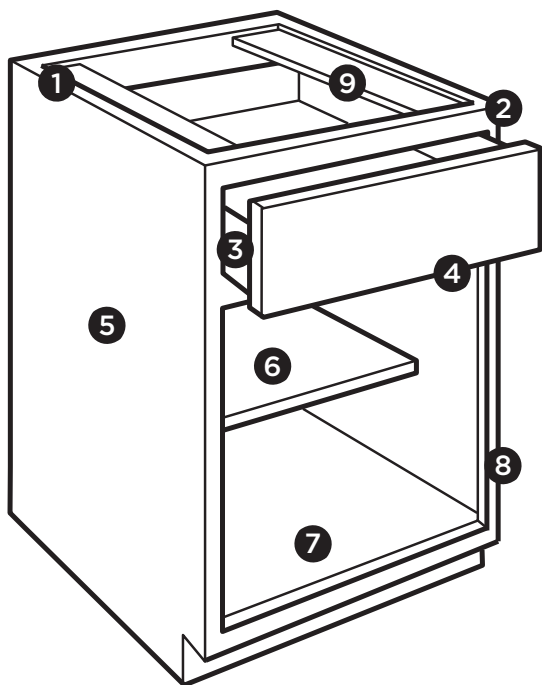


Mineral
Style Code 326
Price Group 3



Snow
Style Code 325
Price Group 3

PRODUCT SPECIFICATIONS






- 1 1/2" Plywood ends, 3/8" top, back, and bottom
- 2 3/4" Hardwood frame, doors and drawer fronts
- 3 5/8" Solid wood dovetail drawer box
- 4 Soft-closing, undermount, full extension drawer guides
- 5 Matching exterior
- 6 3/4" Natural Plywood adjustable shelves
- 7 Natural interior
- 8 Soft-closing, 6-way adjustable hinges
- 9 3/8" Plywood I-beam braces

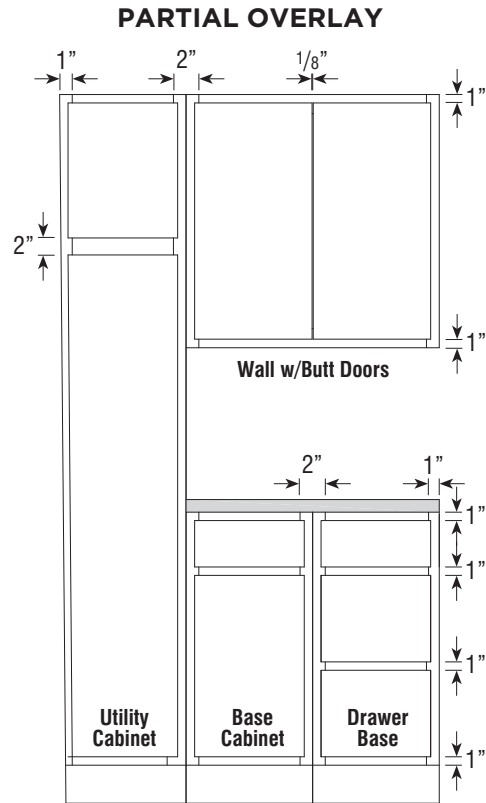
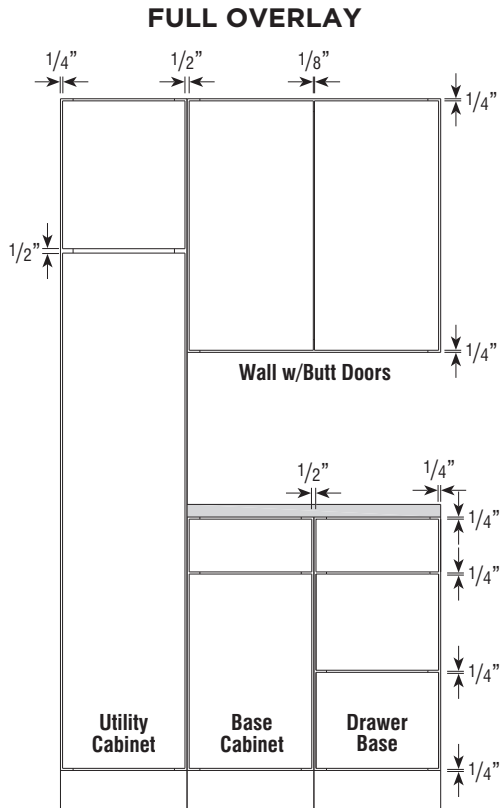
Cabinet Care and Cleaning Instructions:
<https://www.masterbrand.com/care-and-cleaning>

For installation and warranty information, visit: <https://www.mantracabinets.com>

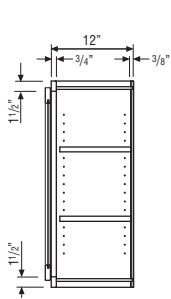
PRICE AND STYLE CODE INFORMATION

	Price Group 1		Price Group 2				Price Group 3	
	Classic Stain	Classic Paint	Omni Stain	Omni Paint	Omni Paint	Omni Paint	Spectra Paint	Spectra Paint
	Bark	Snow	Bark	Snow	Mineral	Graphite	Snow	Mineral
								
Style Code	320	321	322	323	327	328	325	326
Common Style Code -Items with stain/paint price (Ex. Moulding)	310	311	310	311	312	313	311	312
Miscellaneous Code -Items with one price (Ex. Roll Trays)	300	300	300	300	300	300	300	300

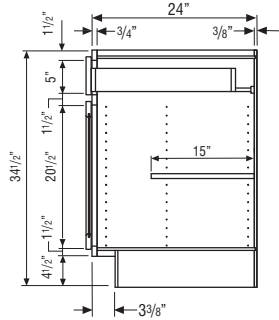
FULL AND PARTIAL OVERLAY SPECIFICATIONS



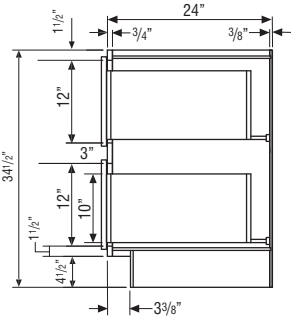
CABINET DIMENSIONS



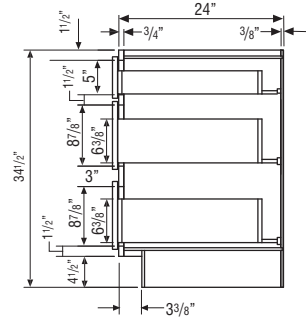
WALL CABINET



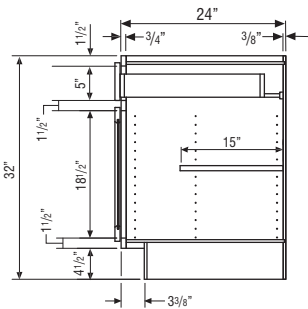
BASE CABINET



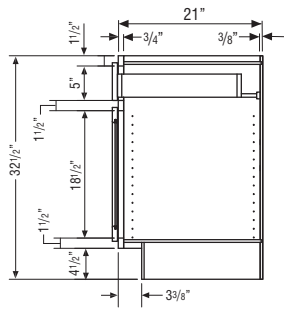
**TWO-DRAWER
BASE CABINET**



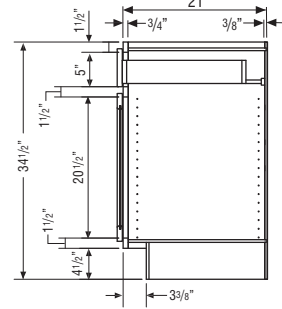
**THREE-DRAWER
BASE CABINET**



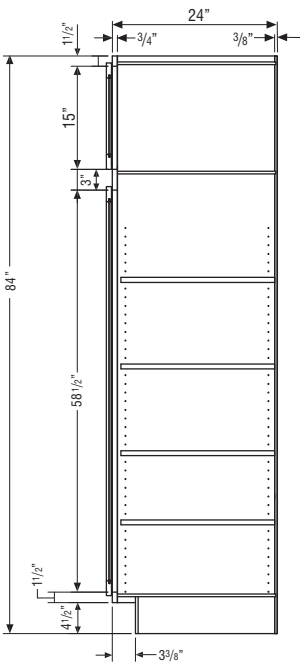
**32 1/2" HIGH
BASE CABINET**



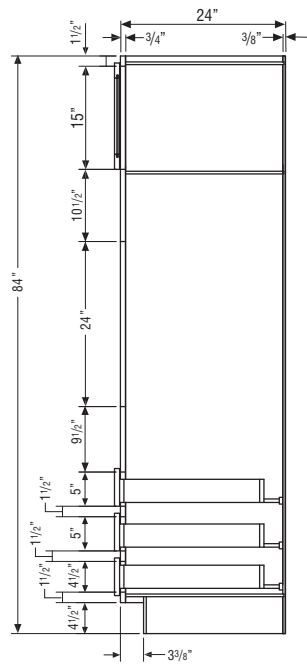
**32 1/2" HIGH
VANITY CABINET**



**34 1/2" HIGH
VANITY CABINET**



UTILITY CABINET

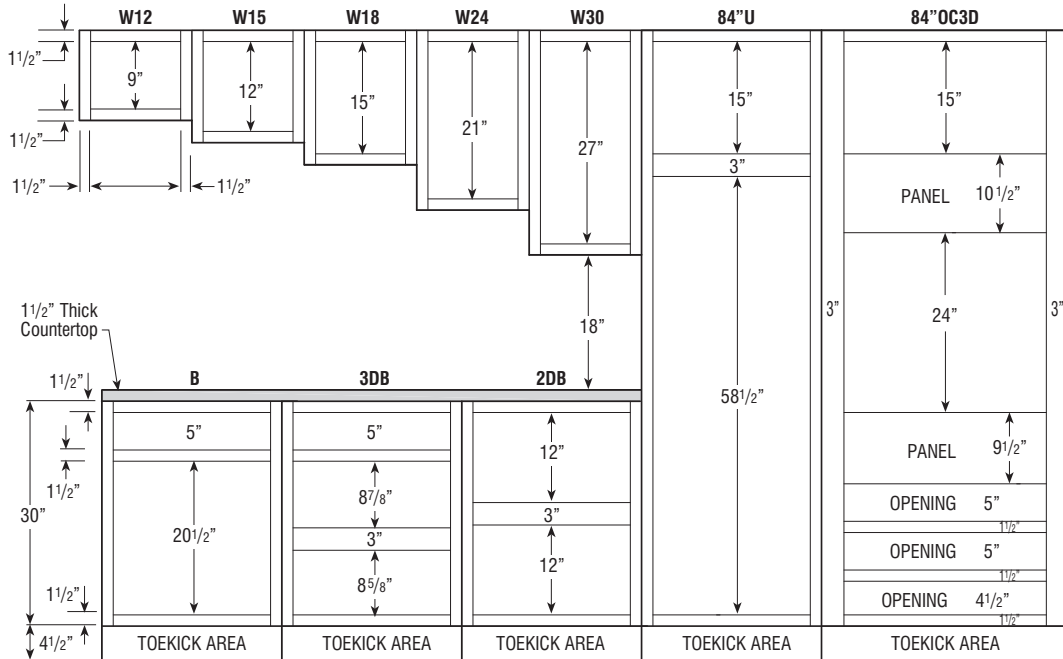


OC3D CABINET

CABINET DIMENSIONS

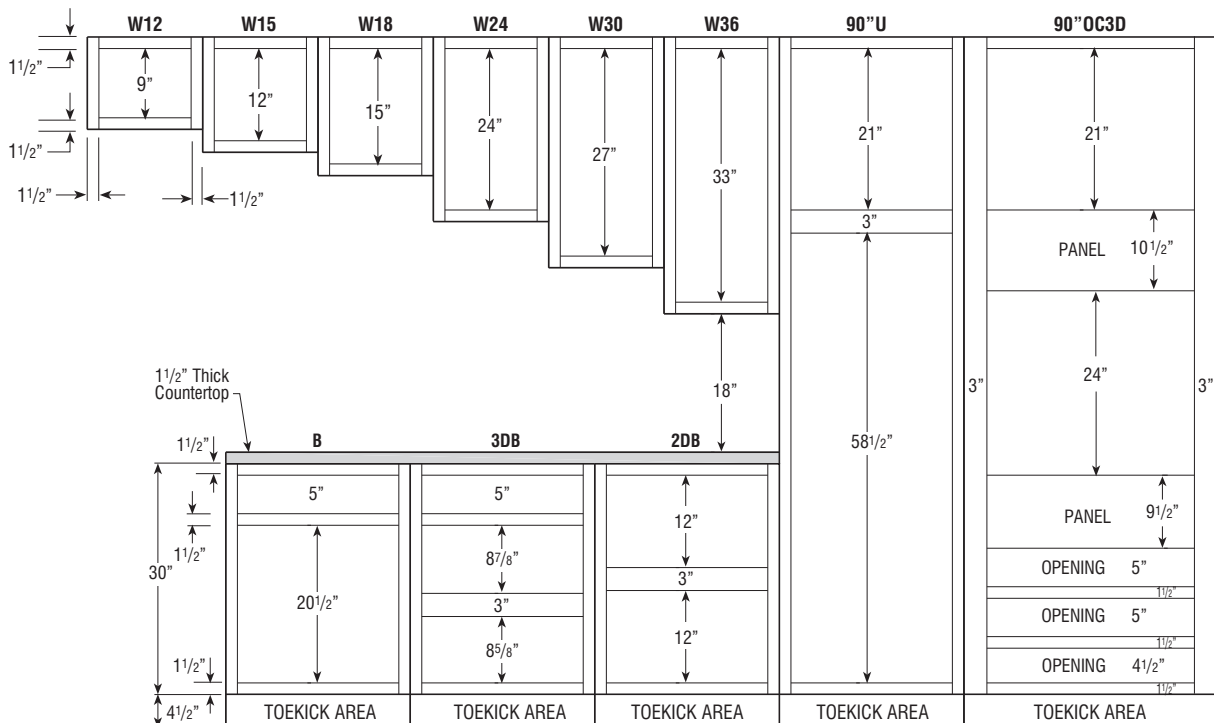
84" HIGH APPLICATION

Number after Wall Cabinet Represents Height of Cabinet



90" HIGH APPLICATION

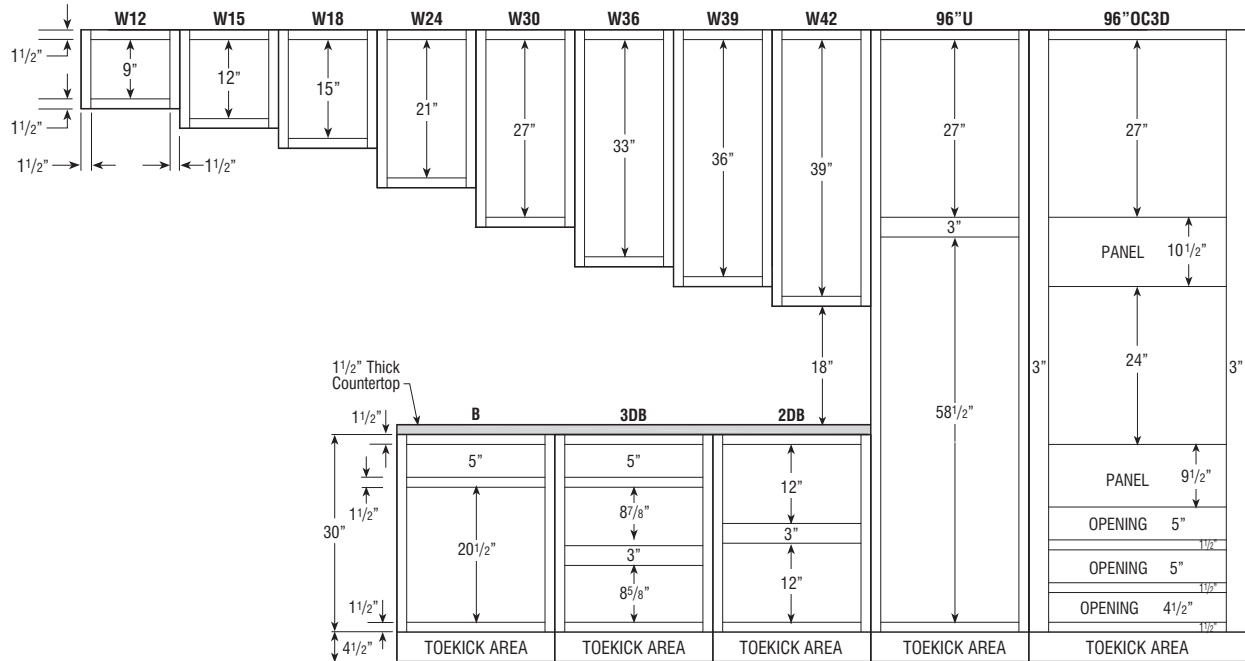
Number after Wall Cabinet Represents Height of Cabinet



CABINET DIMENSIONS

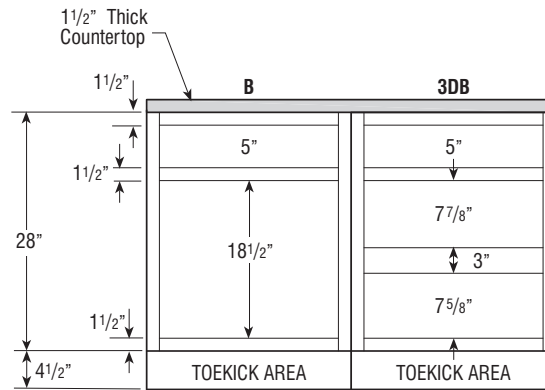
96" HIGH APPLICATION

Number after Wall Cabinet Represents Height of Cabinet

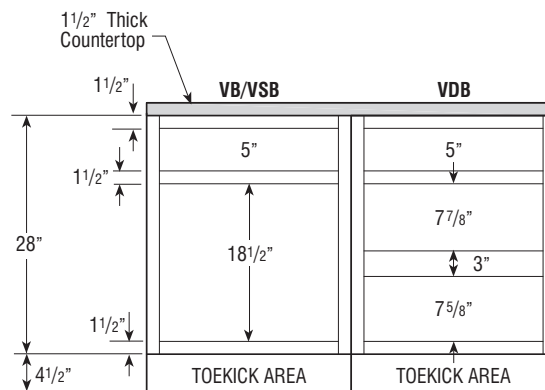


CABINET DIMENSIONS

32 1/2" HIGH BASE CABINETS



32 1/2" HIGH VANITY CABINETS



34 1/2" HIGH VANITY CABINETS

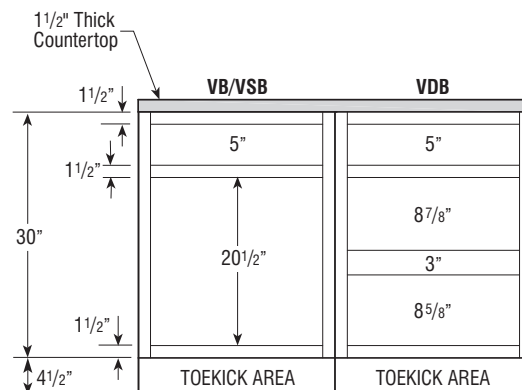


TABLE OF CONTENTS - WALL CABINETS



12" Deep Wall

12" High16
15" High16
18" High17
24" High17
30" High18
36" High20
39" High22
42" High24

12" Deep Wall Cut-for-glass

30" High26
36" High27
42" High28

24" Deep Wall

12" High29
18" High30
24" High30

12" Deep Wall Corner

30" High31
36" High32
39" High33
42" High34

12" Deep Diagonal Wall

30" High35
36" High35
42" High35

12" Deep Diagonal Wall Cut-for-glass

30" High36
36" High36
42" High36

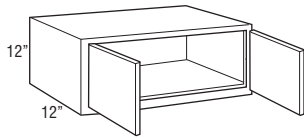
WALL DOUBLE DOOR

12" High

12" Deep

Model	Cubic Feet	1	2	3
W3012	3.4	202	239 [▲]	276
W3312	3.7	232	274 [▲]	314
W3612	4.0	268	317 [▲]	365

▲Omni Bark available while supplies last.



WALL DOUBLE DOOR

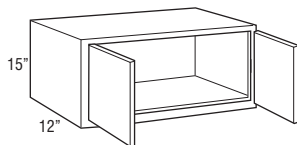
15" High

12" Deep

Model	Cubic Feet	1	2	3
W2415	3.2	266	314	361
W3015	3.9	242	286 [▲]	326
W3315	4.2	264	311 [▲]	361
W3615	4.6	289	339 [▲]	391

• W2415 not available in Classic Bark and Omni Bark.

▲Omni Bark available while supplies last.



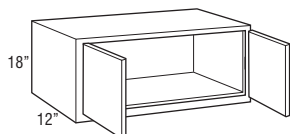
WALL DOUBLE DOOR

18" High

12" Deep

Model	Cubic Feet	1	2	3
W2418	3.8	274	321	371
W3018	4.9	289	339 [▲]	391
W3318	5.3	303	355 [▲]	409
W3618	5.8	309	363 [▲]	416

- W2418 not available in Classic Bark and Omni Bark.
- ▲Omni Bark available while supplies last.



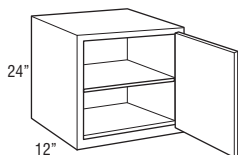
WALL SINGLE DOOR

24" High

12" Deep

Model	Cubic Feet	1	2	3
W2124R	4.6	268	317 [▲]	365

- Cabinet hinged on the right; may be flipped for left hinge application.
- ▲Omni Bark available while supplies last.



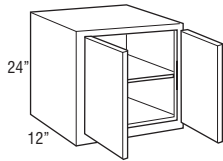
WALL DOUBLE DOOR

24" High

12" Deep

Model	Cubic Feet	1	2	3
W2424	5.2	292	342 [▲]	394
W3024	6.4	322	378 [▲]	437
W3324	7.0	345	407 [▲]	466
W3624	7.6	361	422 [▲]	484

[▲]Omni Bark available while supplies last.



WALL SINGLE DOOR

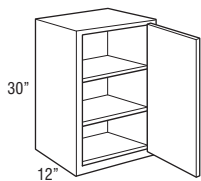
30" High

12" Deep

Model	Cubic Feet	1	2	3
W930R	2.6	228	264 [▲]	303
W1230R	3.4	232	276 [▲]	317
W1530R	4.1	245	292 [▲]	339
W1830R	4.9	266	314 [▲]	363
W2130R	5.6	289	339 [▲]	391

• Cabinet hinged on the right; may be flipped for left hinge application.

[▲]Omni Bark available while supplies last.



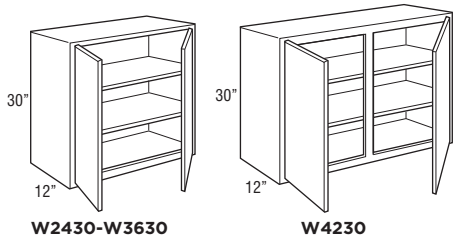
WALL DOUBLE DOOR

30" High

12" Deep

Model	Cubic Feet	1	2	3
W2430	6.4	314	371 [▲]	422
W2730	7.2	348	409 [▲]	475
W3030	7.9	363	425 [▲]	486
W3330	8.7	399	470 [▲]	537
W3630	9.4	413	484 [▲]	556
W4230	11.0	452	534 [▲]	614

▲Omni Bark available while supplies last.



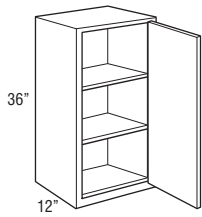
WALL SINGLE DOOR

36" High

12" Deep

Model	Cubic Feet	1	2	3
W936R	3.1	261	303 [▲]	351
W1236R	4.0	274	319 [▲]	371
W1536R	4.9	283	336 [▲]	382
W1836R	5.8	309	363 [▲]	416
W2136R	6.7	336	394 [▲]	452

- Cabinet hinged on the right; may be flipped for left hinge application.
- ▲Omni Bark available while supplies last.



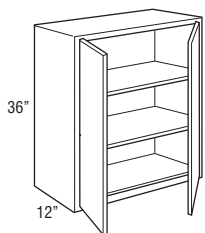
WALL DOUBLE DOOR

36" High

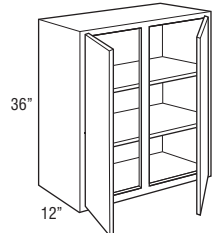
12" Deep

Model	Cubic Feet	1	2	3
W2436	7.6	365	431 [▲]	497
W2736	8.5	404	475 [▲]	546
W3036	9.4	419	494 [▲]	570
W3336	10.3	466	546 [▲]	622
W3636	11.2	481	561 [▲]	648
W4236	13.1	537	630 [▲]	726

▲Omni Bark available while supplies last.



W2436-W3636



W4236

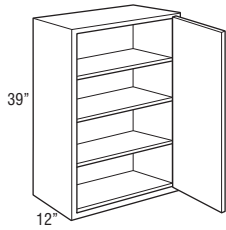
WALL SINGLE DOOR

39" High

12" Deep

Model	Cubic Feet	1	2	3
W939R	3.3	274	312	361
W1239R	4.3	287	329	378
W1539R	5.3	303	347	397
W1839R	6.3	326	374	431
W2139R	7.3	354	407	469

- Cabinet hinged on the right; may be flipped for left hinge application.
- Not available in Classic Bark and Omni Bark.



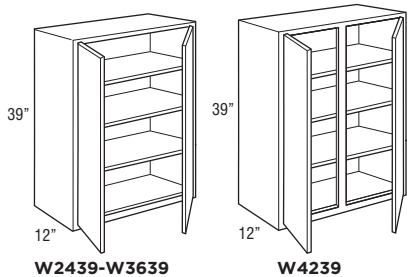
WALL DOUBLE DOOR

39" High

12" Deep

Model	Cubic Feet	1	2	3
W2439	8.2	384	440	507
W2739	9.2	424	487	560
W3039	10.2	443	508	585
W3339	11.2	491	561	644
W3639	12.1	505	578	664
W4239	14.1	563	648	746

• Not available in Classic Bark and Omni Bark.



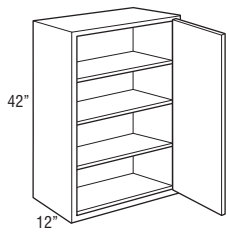
WALL SINGLE DOOR

42" High

12" Deep

Model	Cubic Feet	1	2	3
W942R	3.6	294	345 [▲]	397
W1242R	4.6	309	363 [▲]	416
W1542R	5.7	330	384 [▲]	444
W1842R	6.7	351	413 [▲]	479
W2142R	7.8	382	450 [▲]	517

- Cabinet hinged on the right; may be flipped for left hinge application.
- ▲Omni Bark available while supplies last.



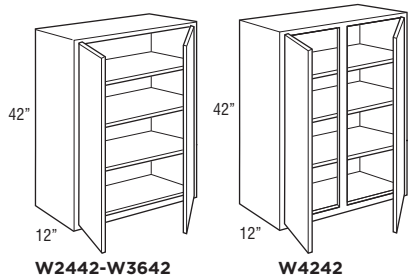
WALL DOUBLE DOOR

42" High

12" Deep

Model	Cubic Feet	1	2	3
W2442	8.8	413	484 [▲]	556
W2742	9.9	455	537 [▲]	617
W3042	11.0	481	561 [▲]	648
W3342	12.0	529	619 [▲]	714
W3642	13.1	542	639 [▲]	733
W4242	15.2	605	714 [▲]	823

▲Omni Bark available while supplies last.



WALL CUT-FOR-GLASS CABINETS

RECOMMENDED GLASS SIZE FOR WALL CABINET DOORS			
SKU	Omni Door Size	Door Route Size	Glass Size
WCG1530R	14 1/2" x 29 1/2"	11 1/4" x 26 1/4"	11 1/16" x 26 1/16"
WCG1830R	17 1/2" x 29 1/2"	14 1/4" x 26 1/4"	14 1/16" x 26 1/16"
WCG3030	14 11/16" x 29 1/2"	11 7/16" x 26 1/4"	11 1/4" x 26 1/16"
WCG3630	17 11/16" x 29 1/2"	14 7/16" x 26 1/4"	14 1/4" x 26 1/16"
WCG1536R	14 1/2" x 35 1/2"	11 1/4" x 32 1/4"	11 1/16" x 32 1/16"
WCG1836R	17 1/2" x 35 1/2"	14 1/4" x 32 1/4"	14 1/16" x 32 1/16"
WCG3036	14 11/16" x 35 1/2"	11 7/16" x 32 1/4"	11 1/4" x 32 1/16"
WCG3636	17 11/16" x 35 1/2"	14 7/16" x 32 1/4"	14 1/4" x 32 1/16"
WCG1542R	14 1/2" x 41 1/2"	11 1/4" x 38 1/4"	11 1/16" x 38 1/16"
WCG1842R	17 1/2" x 41 1/2"	14 1/4" x 38 1/4"	14 1/16" x 38 1/16"
WCG3042	14 11/16" x 41 1/2"	11 7/16" x 38 1/4"	11 1/4" x 38 1/16"
WCG3642	17 11/16" x 41 1/2"	14 7/16" x 38 1/4"	14 1/4" x 38 1/16"

*Recommended glass size dimensions are 3/16" smaller than glass route.

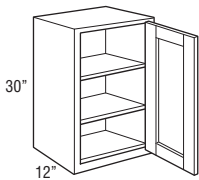
WALL CUT-FOR-GLASS

30" High

12" Deep

Model	Cubic Feet	1	2	3
WCG1530R	4.1	•	328	•
WCG1830R	4.9	•	349	•

- Cabinet hinged on the right; may be flipped for left hinge application.
- Glass not included.
- Cabinets will have matching interior.
- Not available in Omni Bark.



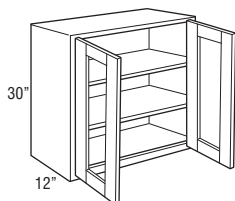
WALL CUT-FOR-GLASS

30" High

12" Deep

Model	Cubic Feet	1	2	3
WCG3030	7.9	•	504	•
WCG3630	9.4	•	560	•

- Glass not included.
- Cabinets will have matching interior.
- Not available in Omni Bark.



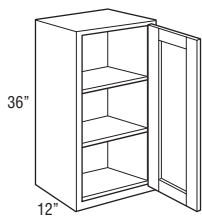
WALL CUT-FOR-GLASS

36" High

12" Deep

Model	Cubic Feet	1	2	3
WCG1536R	4.9	•	371	•
WCG1836R	5.8	•	397	•

- Cabinet hinged on the right; may be flipped for left hinge application.
- Glass not included.
- Cabinets will have matching interior.
- Not available in Omni Bark.



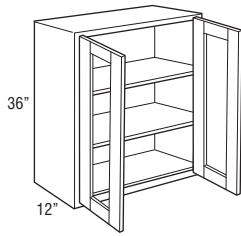
WALL CUT-FOR-GLASS

36" High

12" Deep

Model	Cubic Feet	1	2	3
WCG3036	9.4	•	570	•
WCG3636	11.2	•	634	•

- Glass not included.
- Cabinets will have matching interior.
- Not available in Omni Bark.



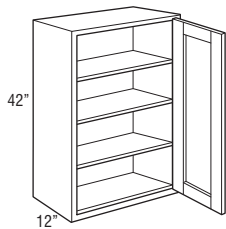
WALL CUT-FOR-GLASS

42" High

12" Deep

Model	Cubic Feet	1	2	3
WCG1542R	5.7	•	416	•
WCG1842R	6.7	•	444	•

- Cabinet hinged on the right; may be flipped for left hinge application.
- Glass not included.
- Cabinets will have matching interior.
- Not available in Omni Bark.



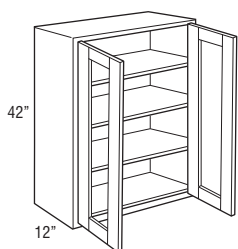
WALL CUT-FOR-GLASS

42" High

12" Deep

Model	Cubic Feet	1	2	3
WCG3042	11.0	•	634	•
WCG3642	13.0	•	710	•

- Glass not included.
- Cabinets will have matching interior.
- Not available in Omni Bark.



WALL DOUBLE DOOR

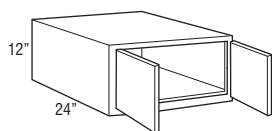
12" High

24" Deep

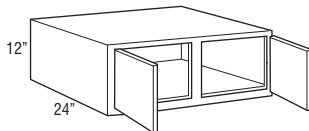
Model	Cubic Feet	1	2	3
W361224	7.4	326	382 [▲]	442

- 24" deep cabinets must be supported on three surfaces when mounted.
- Load limit is 15 lbs. per square foot of load bearing surface.

▲Omni Bark available while supplies last.



W361224



W391224

WALL DOUBLE DOOR

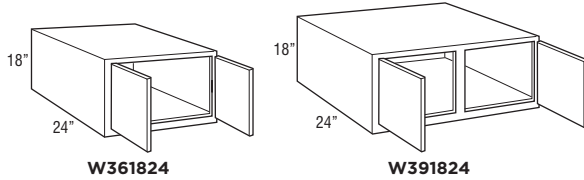
18" High

24" Deep

Model	Cubic Feet	1	2	3
W361824	10.7	353	416 [▲]	481
W391824	11.5	371	435 [▲]	499

- 24" deep cabinets must be supported on three surfaces when mounted.
- Load limit is 15 lbs. per square foot of load bearing surface.

▲Omni Bark available while supplies last.



WALL DOUBLE DOOR

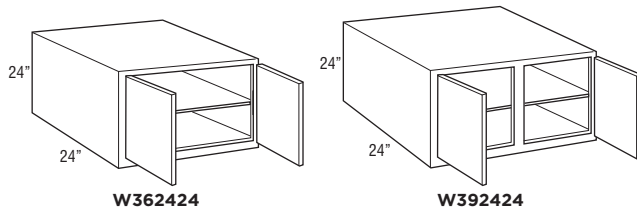
24" High

24" Deep

Model	Cubic Feet	1	2	3
W362424	14.0	404	475 [▲]	546

- 24" deep cabinets must be supported on three surfaces when mounted.
- Load limit is 15 lbs. per square foot of load bearing surface.

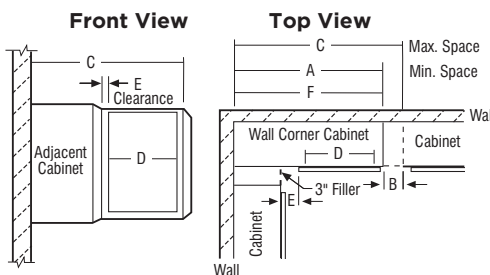
▲Omni Bark available while supplies last.



WALL CORNER CABINETS

SKU	A Min. Space	B Max. Pull	C Max. Space	D Cabinet Opening	E Full Overlay		E Partial Overlay		F Actual Cabinet
					At Min.	At Max.	At Min.	At Max.	
WC30...	30"	5"	35"	13 1/2"	1 3/4"	6 3/4"	2 1/2"	7 1/2"	30"
WC36...	36"	5"	41"	19 1/2"	1 3/4"	6 3/4"	2 1/2"	7 1/2"	36"
WC42...	42"	4 1/2"	46 1/2"	24"	3 1/4"	7 3/4"	4"	8 1/2"	42"

- Wall corner cabinets may be installed flush to the wall (left) or pulled 3" away from wall (right) to accommodate add dimensions in a kitchen design. In either case, the adjoining run of 12" wall cabinets plus a 3" filler will butt against the solid-wood panel.
- When a cabinet is "pulled" it will use proportionally more space, for example, a 30" wide WC, pulled 2" will use 32" of space.
- Blind side of wall corner cabinets cannot be installed next to a range hood unit due to door interference.



NOTE:
All outside stiles are 1 1/2" wide

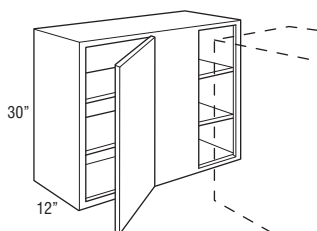
WALL CORNER SINGLE DOOR

30" High

12" Deep

Model	Cubic Feet	1	2	3
WC3030S	7.9	314	371 [▲]	422
WC3630S	9.4	348	409 [▲]	470

- Right blind shown; cabinet may be flipped for left blind application.
- Filler required for installation. Must be ordered separately.
- ▲Omni Bark available while supplies last.



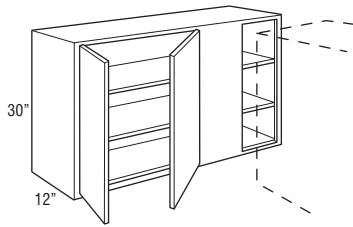
WALL CORNER DOUBLE DOOR

30" High

12" Deep

Model	Cubic Feet	1	2	3
WC4230S	11.0	404	475 [▲]	546

- Right blind shown; cabinet may be flipped for left blind application.
- Filler required for installation. Must be ordered separately.
- ▲Omni Bark available while supplies last.



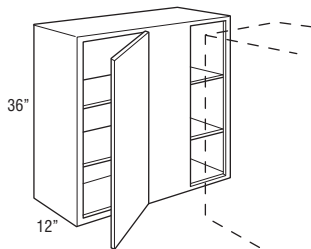
WALL CORNER SINGLE DOOR

36" High

12" Deep

Model	Cubic Feet	1	2	3
WC3036S	9.4	378	447 [▲]	515
WC3636S	11.2	413	484 [▲]	556

- Right blind shown; cabinet may be flipped for left blind application.
- Filler required for installation. Must be ordered separately.
- ▲Omni Bark available while supplies last.



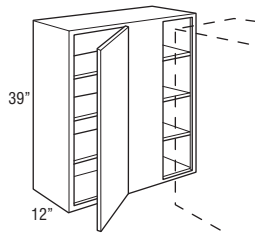
WALL CORNER SINGLE DOOR

39" High

12" Deep

Model	Cubic Feet	1	2	3
WC3039S	10.2	404	464	536
WC3639S	12.1	444	506	579

- Right blind shown; cabinet may be flipped for left blind application.
- Filler required for installation. Must be ordered separately.
- Not available in Classic Bark and Omni Bark.



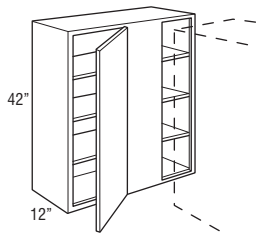
WALL CORNER SINGLE DOOR

42" High

12" Deep

Model	Cubic Feet	1	2	3
WC3042S	11.0	425	499 [▲]	578
WC3642S	13.1	466	546 [▲]	622

- Right blind shown; cabinet may be flipped for left blind application.
- Filler required for installation. Must be ordered separately.
- ▲Omni Bark available while supplies last.



DIAGONAL WALL

30" High

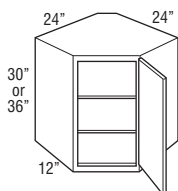
36" High

12" Deep

Model	Cubic Feet	1	2	3
DW302424R	10.8	363	425 [▲]	486
DW362424R	12.9	435	515 [▲]	590

- Cabinet hinged on the right; may be flipped for left hinge application.
- Cabinets require 24" x 24" of corner wall space.

▲Omni Bark available while supplies last.



DIAGONAL WALL

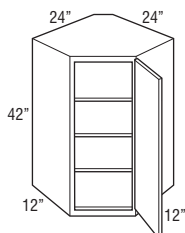
42" High

12" Deep

Model	Cubic Feet	1	2	3
DW422424R	14.9	524	617 [▲]	711

- Cabinet hinged on the right; may be flipped for left hinge application.
- Cabinets require 24" x 24" of corner wall space.

▲Omni Bark available while supplies last.



DIAGONAL WALL CUT-FOR-GLASS CABINETS

RECOMMENDED GLASS SIZE FOR WALL CABINET DOORS			
SKU	Omni Door Size	Door Route Size	Glass Size
DWCG302424R	14 1/2" x 29 1/2"	11 1/4" x 26 1/4"	11 1/16" x 26 1/16"
DWCG362424R	14 1/2" x 35 1/2"	11 1/4" x 32 1/4"	11 1/16" x 32 1/16"
DWCG422424R	14 1/2" x 41 1/2"	11 1/4" x 38 1/4"	11 1/16" x 38 1/16"

*Recommended glass size dimensions are 3/16" smaller than glass route.

DIAGONAL WALL CUT-FOR-GLASS

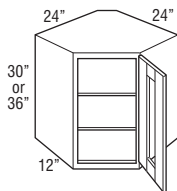
30" High

36" High

12" Deep

Model	Cubic Feet	1	2	3
DWCG302424R	10.8	•	504	•
DWCG362424R	12.9	•	590	•

- Cabinet hinged on the right; may be flipped for left hinge application.
- Cabinets require 24" x 24" of corner wall space.
- Glass not included.
- Cabinets will have matching interior.
- Not available in Omni Bark.



DIAGONAL WALL CUT-FOR-GLASS

42" High

12" Deep

Model	Cubic Feet	1	2	3
DWCG422424R	14.9	•	689	•

- Cabinet hinged on the right; may be flipped for left hinge application.
- Cabinets require 24" x 24" of corner wall space.
- Glass not included.
- Cabinets will have matching interior.
- Not available in Omni Bark.

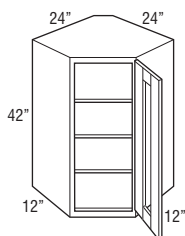


TABLE OF CONTENTS – BASE CABINETS



34 1/2" High, 24" Deep

Base with Drawer	38
Full Height Base	39
Drawer Base	40
Base Built-in Microwave Cabinet with Drawer	42
Base Wastebasket	42
Sink Base	43
Base Sink Removable	46
Base Corner	47

BASE SINGLE DOOR

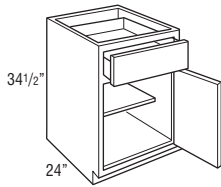
34½" High

24" Deep

Model	Cubic Feet	1	2	3
B9R	5.4	268	317 [▲]	365
B12R	7.1	292	342 [▲]	394
B15R	8.7	314	371 [▲]	422
B18R	10.3	339	399 [▲]	459
B21R	11.7	365	431 [▲]	497

- Cabinet hinged on the right; door may be flipped for left hinge application.
- Roll tray kits available for 15"-21" widths.

▲Omni Bark available while supplies last.



BASE DOUBLE DOOR

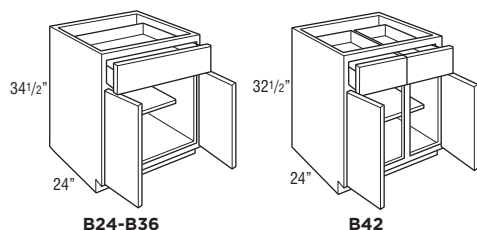
34½" High

24" Deep

Model	Cubic Feet	1	2	3
B24	13.3	422	497 [▲]	575
B27	14.9	455	537 [▲]	617
B30	16.5	488	580 [▲]	664
B33	18.1	531	622 [▲]	716
B36	19.6	575	673 [▲]	776
B42	22.8	619	728 [▲]	837

• Roll tray kits available for 24"-42" widths.

▲Omni Bark available while supplies last.



FULL HEIGHT BASE SINGLE DOOR

34½" High

24" Deep

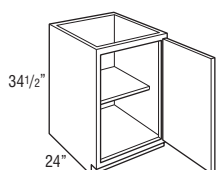
Model	Cubic Feet	1	2	3
B9FHR	5.4	263	309	355
B15FHR	8.5	264	311 [▲]	361
B18FHR	10.1	283	336 [▲]	382

• Cabinet hinged on the right; door may be flipped for left hinge application.

• Roll tray kits available for 15"-21" widths.

• B9FHR not available in Classic Bark and Omni Bark.

▲Omni Bark available while supplies last.



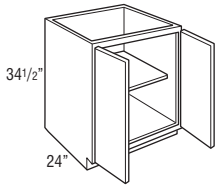
FULL HEIGHT BASE DOUBLE DOOR

34½" High

24" Deep

Model	Cubic Feet	1	2	3
B24FH	13.3	348	409 [▲]	470
B30FH	16.5	404	475 [▲]	546
B36FH	19.6	431	506 [▲]	583

- Roll tray kits available for 24"-36" widths.
- ▲Omni Bark available while supplies last.



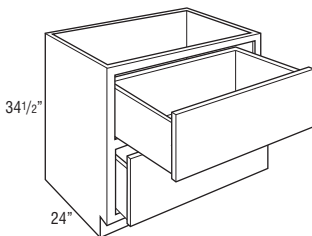
2 DRAWER BASE

34½" High

24" Deep

Model	Cubic Feet	1	2	3
2DB30	16.5	641	757 [▲]	871
2DB36	19.6	703	827 [▲]	950

- On door styles with slab drawer fronts, all drawer fronts will be slab.
- ▲Omni Bark available while supplies last.



3 DRAWER BASE

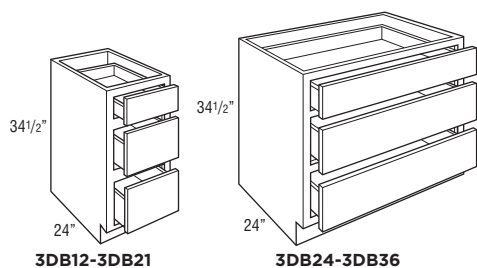
34½" High

24" Deep

Model	Cubic Feet	1	2	3
3DB12	7.0	409	481 [▲]	552
3DB15	8.5	447	524 [▲]	603
3DB18	10.1	486	578 [▲]	662
3DB21	11.7	537	630 [▲]	726
3DB24	13.3	590	692 [▲]	795
3DB30	16.5	641	757 [▲]	871
3DB36	19.6	703	827 [▲]	950

• On door styles with slab drawer fronts, all drawer fronts will be slab.

▲Omni Bark available while supplies last.



BASE BUILT-IN MICROWAVE CABINET WITH DRAWER

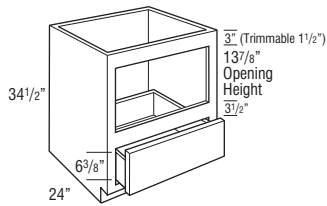
34 1/2" High

24" Deep

Model	Cubic Feet	1	2	3
BBMWD30	16.1	613	725 [▲]	831

• The usable cabinet face height between top of drawer front and top of cabinet is 19 1/8" for partial overlay and 19 3/4" for full overlay. Be sure to verify overall appliance height, gap requirements, and cut-out dimensions with cabinet specifications.

▲Omni Bark available while supplies last.



Model	Opening Width	Maximum Width	Opening Height	Maximum Height
BBMWD30	27"	28 1/2"	13 7/8"	16 7/8"

BASE WASTEBASKET

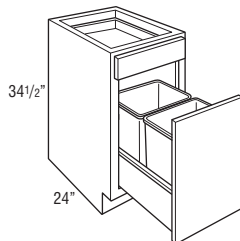
34 1/2" High

24" Deep

Model	Cubic Feet	1	2	3
BWB18	10.3	556	658 [▲]	757

• Pull-out features undermount full extension, soft-close guides.
 • Includes two 35 quart gray wastebaskets.

▲Omni Bark available while supplies last.



SINK BASE

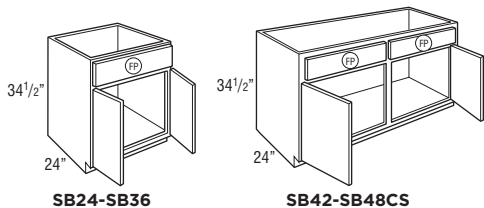
34 1/2" High

24" Deep

Model	Cubic Feet	1	2	3
SB24	13.3	330	384 [▲]	444
SB27	14.9	348	409 [▲]	475
SB30	16.5	365	427 [▲]	488
SB33	18.1	399	472 [▲]	542
SB36	19.6	419	494 [▲]	570
SB42	22.8	444	521 [▲]	600

- Mini Touch-Up Kit (MTUK) included. MTUK includes small touch-up marker and small fill stick.
- Tilt-out tray kits available.

▲Omni Bark available while supplies last.



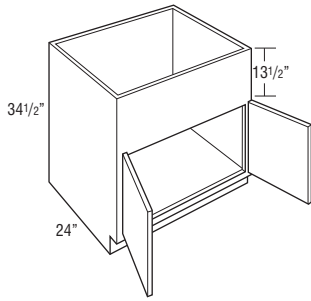
COUNTRY SINK BASE

34 1/2" High

24" Deep

Model	Cubic Feet	1	2	3
CNTYSB36	19.6	524	617▲	711

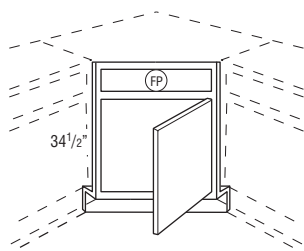
- 13 1/2" panel can be trimmed up to 12".
 - Mini Touch-Up Kit (MTUK) included. MTUK includes small touch-up marker and small fill stick.
 - Refer to manufacturer's recommendations for additional support required for apron front sinks.
- ▲Omni Bark available while supplies last.



ANGLED CORNER SINK FRONT 34 1/2" High

Model	Cubic Feet	1	2	3
ACSF36R	2.9	264	311 [▲]	361

- Frame edges beveled at 45°.
 - Toekick and toekick retainer shipped unattached from the face frame.
 - Sink base floor not included.
 - Cabinet hinged on the right; door may be flipped for left hinge application.
- ▲Omni Bark available while supplies last.



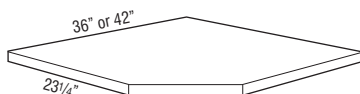
Max. Sink Widths if cut-out is 4" back from face of front frame

Wall Width	Frame	Maximum Sink Width	Maximum Sink Depth
36" x 36"	17"	25 3/4"	27 11/32"
42" x 42"	25 1/2"	34 1/4"	27 11/32"

ANGLED CORNER SINK FRONT BOTTOM

Model	Cubic Feet	1	2	3
ACSF36	1.0	142	142	142

- Designed for use with Angled Corner Sink Front.
- 3/4" thick.
- 1-side laminated plywood.



BASE SINK REMOVABLE

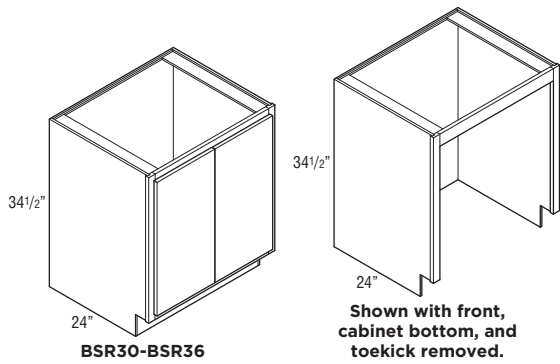
34 1/2" High

24" Deep

Model	Cubic Feet	1	2	3
BSR36†	16.4	•	371	•

- Cabinet must supported on both sides. Not intended for end of run.
- Front, cabinet bottom, and toe-kick are removable.
- Mini Touch-Up Kit (MTUK) included. MTUK includes small touch-up marker and small fill stick.
- Not available in Omni Bark, Omni Graphite, and Omni Mineral.

†SKU size available while supplies last.



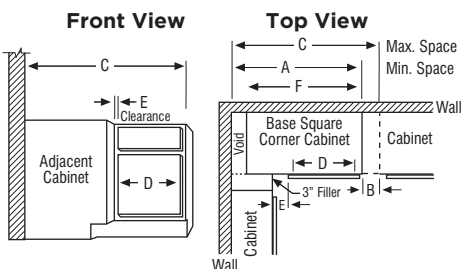
BASE CORNER CABINETS

SKU	A Min. Space	B Max. Pull	C Max. Space	D Cabinet Opening	E Full Overlay		E Partial Overlay		F Actual Cabinet
					At Min.	At Max.	At Min.	At Max.	
BC36S	36"	6"	42"	7 1/2"	1 3/4"	7 3/4"	2 1/2"	8 1/2"	27"
BC42S	42"	6"	48"	13 1/2"	1 3/4"	7 3/4"	2 1/2"	8 1/2"	39"
BC48S	48"	3"	51"	16 1/2"	4 3/4"	7 3/4"	5 1/2"	8 1/2"	45"

- BCs use the wall space the nomenclature implies and may be pulled up to 3" to accommodate odd dimensions in a kitchen.
- Remember to use 3" filler on adjoining cabinets.
- The adjoining run of cabinets will cover the void.

NOTE:

Full overlay styles must be pulled an additional 1 1/2" to ensure proper drawer/pull clearance. 1 1/2" pull is not included in minimum and maximum list.



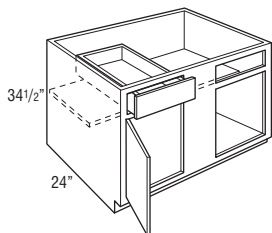
BASE CORNER SINGLE DOOR

34 1/2" High

24" Deep

Model	Cubic Feet	1	2	3
BC36S	15.0	399	472 [▲]	542
BC42S	21.3	450	531 [▲]	612
BC48S	24.5	524	617 [▲]	711

- Right blind shown; door and drawer can be reversed for left blind application.
- Filler required for installation. Must be ordered separately.
- ▲Omni Bark available while supplies last.



BASE EASY REACH

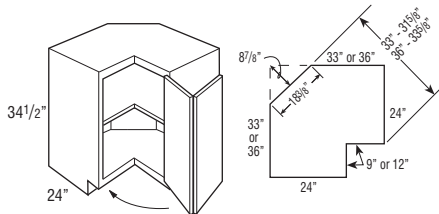
34 1/2" High

24" Deep

Model	Cubic Feet	1	2	3
BER33R	26.3	620	712	820
BER36R	29.1	662	778 [▲]	897

- BER33R wall width is 33" x 33". BER36R wall width is 36" x 36".
- Decorative hardware screws must be countersunk to prevent scratching of adjacent cabinets and face frame of BER.
- Not recommended for use next to an appliance deeper than standard cabinet depth.
- Soft-close not available.
- Cabinet hinged on the right; door may be flipped for left hinge application.
- BER33R not available in Classic Bark and Omni Bark.

▲Omni Bark available while supplies last.



Due to the fixed shelves mounting shelves cannot be retrofitted.

SUPER LAZY SUSAN

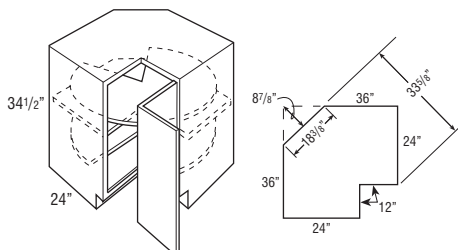
34 1/2" High

24" Deep

Model	Cubic Feet	1	2	3
SLS36R	29.1	837	981 [▲]	1128

- Wall width is 36" x 36".
- Features two plywood revolving shelves. Lower shelf is mounted to floor. Upper shelf is mounted to fixed shelf.
- Decorative hardware screws must be countersunk to prevent scratching adjacent cabinets and face frame of SLS.
- Not recommended for use next to an appliance deeper than standard cabinet depth.
- Soft-close not available.
- Cabinet hinged on the right; door may be flipped for left hinge application.

▲Omni Bark available while supplies last.



Due to the fixed shelves mounting shelves cannot be retrofitted.

BASE LAZY SUSAN

34 1/2" High

24" Deep

Model	Cubic Feet	1	2	3
BLS36R	20.4	595	701 [▲]	803

- Wall width is 36" x 36".
 - Cabinet is drum-shaped; adjoining cabinets create sides.
 - Features two white plastic shelves.
 - Decorative hardware screws must be countersunk to prevent scratching of adjacent cabinets and face frame of BLS.
 - Not recommended for use next to an appliance deeper than standard cabinet depth.
 - Soft-close not available.
 - Cabinet hinged on the right; door may be flipped for left hinge application.
 - Back material made from MDF.
- ▲Omni Bark available while supplies last.

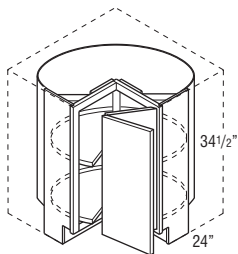
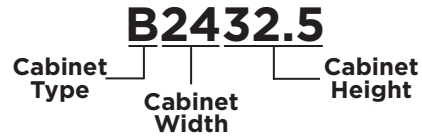


TABLE OF CONTENTS - UNIVERSAL DESIGN CABINETS



32 1/2" High, 24" Deep

Universal Design Base51
Universal Design Drawer Base53
Universal Design Sink Base54
Universal Design Base Sink Removable55
Universal Design Base Corner56

UNIVERSAL DESIGN, BASE SINGLE DOOR

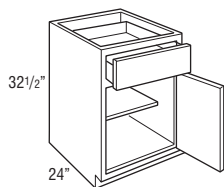
32½" High

24" Deep

Model	Cubic Feet	1	2	3
B932.5R†	5.0	•	317	•
B1232.5R	6.5	•	342	•
B1532.5R	8.0	•	371	•
B1832.5R	9.4	•	399	•
B2132.5R	10.9	•	431	•

- Cabinet hinged on the right; door may be flipped for left hinge application.
- Roll tray kits available for 15"-21" widths.
- Not available in Classic Snow, Omni Bark, Omni Mineral, and Omni Graphite.

†SKU size available while supplies last.



UNIVERSAL DESIGN, BASE DOUBLE DOOR

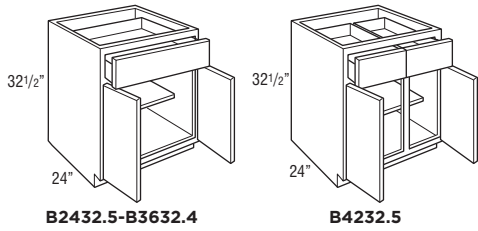
32 1/2" High

24" Deep

Model	Cubic Feet	1	2	3
B2432.5	12.4	•	497	•
B2732.5 [†]	13.8	•	537	•
B3032.5	15.3	•	580	•
B3332.5 [†]	16.8	•	622	•
B3632.5	18.3	•	673	•
B4232.5 [†]	21.2	•	728	•

- Roll tray kits available for 24"-42" widths.
- Not available in Classic Snow, Omni Bark, Omni Mineral, and Omni Graphite.

[†]SKU size available while supplies last.



UNIVERSAL DESIGN, 3 DRAWER BASE

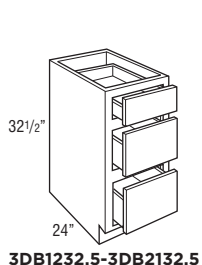
32½" High

24" Deep

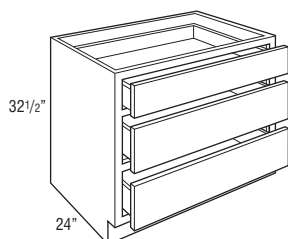
Model	Cubic Feet	1	2	3
3DB1232.5†	6.3	•	481	•
3DB1532.5	8.0	•	524	•
3DB1832.5	9.4	•	578	•
3DB2132.5†	10.9	•	630	•
3DB2432.5†	12.4	•	692	•
3DB3032.5†	16.5	•	757	•
3DB3632.5†	19.6	•	827	•

- On door styles with slab drawer fronts, all drawer fronts will be slab.
- Not available in Classic Snow, Omni Bark, Omni Mineral, and Omni Graphite.

†SKU size available while supplies last.



3DB1232.5-3DB2132.5



3DB2432.5-3DB3632.5

UNIVERSAL DESIGN, SINK BASE

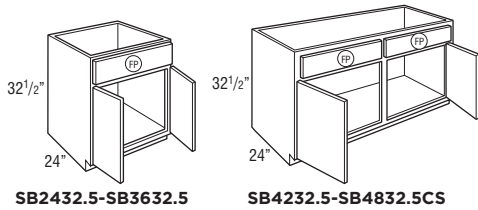
32½" High

24" Deep

Model	Cubic Feet	1	2	3
SB2432.5 [†]	12.6	•	384	•
SB2732.5 [†]	14.1	•	409	•
SB3032.5 [†]	15.3	•	427	•
SB3332.5 [†]	17.1	•	472	•
SB3632.5 [†]	18.6	•	494	•
SB4232.5 [†]	21.6	•	521	•
SB4832.5CS [†]	24.6	•	603	•

- Mini Touch-Up Kit (MTUK) included. MTUK includes small touch-up marker and small fill stick.
- Tilt-out tray kits available.
- Not available in Classic Snow, Omni Bark, Omni Mineral, and Omni Graphite.

[†]SKU size available while supplies last.



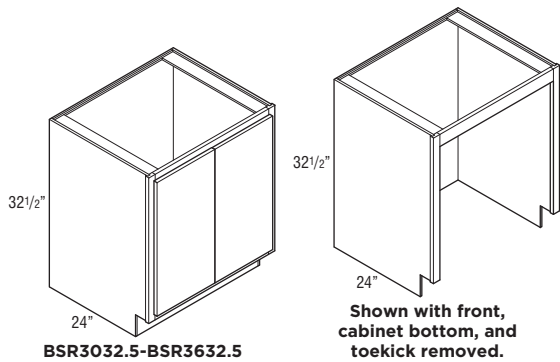
UNIVERSAL DESIGN, BASE SINK REMOVABLE

32 1/2" High

24" Deep

Model	Cubic Feet	1	2	3
BSR3032.5	13.7	•	351	•
BSR3632.5	16.4	•	371	•

- Cabinet must supported on both sides. Not intended for end of run.
- Front, cabinet bottom, and toe-kick are removable.
- Mini Touch-Up Kit (MTUK) included. MTUK includes small touch-up marker and small fill stick.
- Not available in Classic Snow, Omni Bark, Omni Mineral, and Omni Graphite.



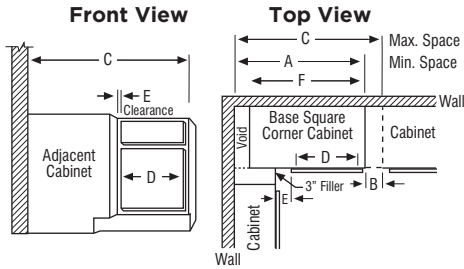
UNIVERSAL DESIGN CORNER CABINETS

SKU	A Min. Space	B Max. Pull	C Max. Space	D Cabinet Opening	E Full Overlay At Min. At Max.		E Partial Overlay At Min. At Max.		F Actual Cabinet
BC3632.5S	32"	6"	42"	7 1/2"	1 3/4"	7 3/4"	2 1/2"	8 1/2"	27"
BC4232.5S	42"	6"	48"	13 1/2"	1 3/4"	7 3/4"	2 1/2"	8 1/2"	39"
BC4832.5S	48"	3"	51"	16 1/2"	4 3/4"	7 3/4"	5 1/2"	8 1/2"	45"

- BCs use the wall space the nomenclature implies and may be pulled up to 3" to accommodate odd dimensions in a kitchen.
- Remember to use 3" filler on adjoining cabinets.
- The adjoining run of cabinets will cover the void.

NOTE:

Full overlay styles must be pulled an additional 1 1/2" to ensure proper drawer/pull clearance. 1 1/2" pull is not included in minimum and maximum list.



UNIVERSAL DESIGN, BASE CORNER SINGLE DOOR

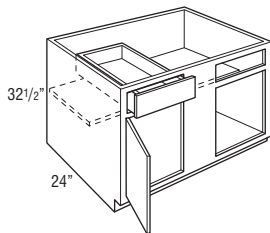
32 1/2" High

24" Deep

Model	Cubic Feet	1	2	3
BC3632.5S	14.1	•	472	•
BC4232.5S [†]	18.3	•	531	•
BC4832.5S [†]	22.7	•	617	•

- Right blind shown; door and drawer can be reversed for left blind application.
- Filler required for installation. Must be ordered separately.
- Not available in Classic Snow, Omni Bark, Omni Mineral, and Omni Graphite.

[†]SKU size available while supplies last.



UNIVERSAL DESIGN, SUPER LAZY SUSAN

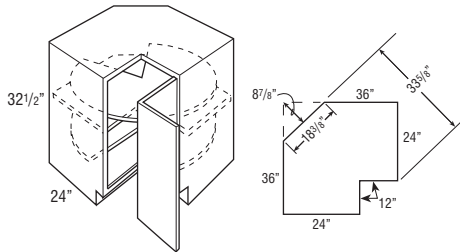
32 1/2" High

24" Deep

Model	Cubic Feet	1	2	3
SLS3632.5R [†]	18.4	•	981	•

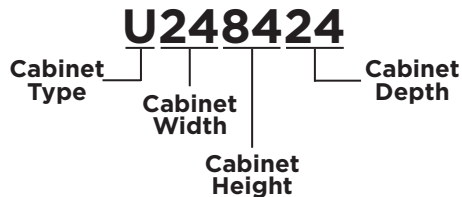
- Wall width is 36" x 36".
- Features two plywood revolving shelves. Lower shelf is mounted to floor. Upper shelf is mounted to fixed shelf.
- Decorative hardware screws must be countersunk to prevent scratching adjacent cabinets and face frame of SLS.
- Not recommended for use next to an appliance deeper than standard cabinet depth.
- Soft-close not available.
- Cabinet hinged on the right; door may be flipped for left hinge application.
- Not available in Classic Snow, Omni Bark, Omni Mineral, and Omni Graphite.

[†]SKU size available while supplies last.



Due to the fixed shelves mounting shelves cannot be retrofitted.

TABLE OF CONTENTS - TALL CABINETS



18" Wide Utility Single Door

84" High59
 90" High59
 96" High60

24" Wide Utility Double Door

84" High60
 90" High61
 96" High61

30" Wide Utility Double Door

84" High62
 90" High62
 96" High63

33" Wide Single Oven 3 Drawers

90" High64
 96" High64

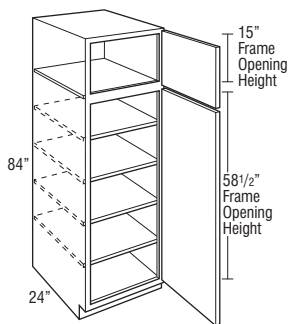
18" WIDE UTILITY SINGLE DOOR

84" High

24" Deep

Model	Cubic Feet	1	2	3
U188424R	23.4	750	881 [▲]	1014

- Roll tray kits available.
- Cabinet hinged on the right; door may be flipped for left hinge application.
- ▲Omni Bark available while supplies last.



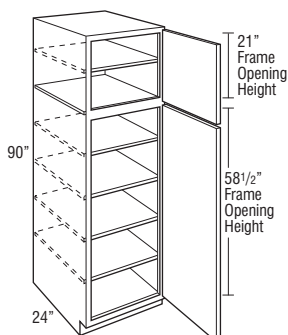
18" WIDE UTILITY SINGLE DOOR

90" High

24" Deep

Model	Cubic Feet	1	2	3
U189024R	25.4	837	981 [▲]	1128

- Roll tray kits available.
- Cabinet hinged on the right; door may be flipped for left hinge application.
- ▲Omni Bark available while supplies last.



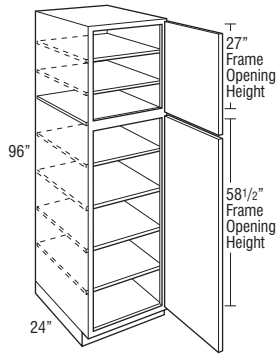
18" WIDE UTILITY SINGLE DOOR

96" High

24" Deep

Model	Cubic Feet	1	2	3
U189624R	27.0	933	1096 [▲]	1261

- Separate pedestal base included on 96" tall.
 - Roll tray kits available.
 - Cabinet hinged on the right; door may be flipped for left hinge application.
- [▲]Omni Bark available while supplies last.



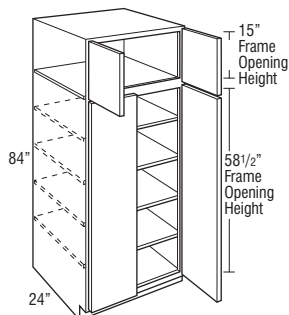
24" WIDE UTILITY DOUBLE DOOR

84" High

24" Deep

Model	Cubic Feet	1	2	3
U248424	30.9	911	1076 [▲]	1238

- Roll tray kits available.
- [▲]Omni Bark available while supplies last.



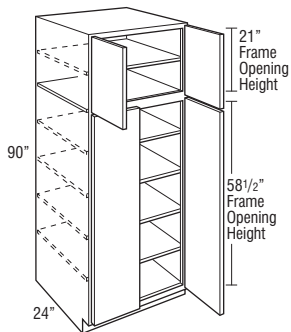
24" WIDE UTILITY DOUBLE DOOR

90" High

24" Deep

Model	Cubic Feet	1	2	3
U249024	33.4	1024	1205 [▲]	1383

- Roll tray kits available.
- ▲Omni Bark available while supplies last.



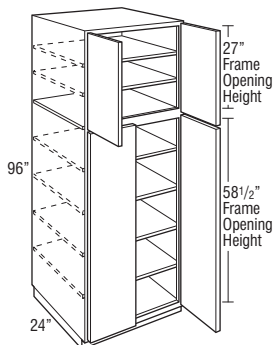
24" WIDE UTILITY DOUBLE DOOR

96" High

24" Deep

Model	Cubic Feet	1	2	3
U249624	35.6	1148	1350 [▲]	1550

- Separate pedestal base included on 96" tall.
- Roll tray kits available.
- ▲Omni Bark available while supplies last.



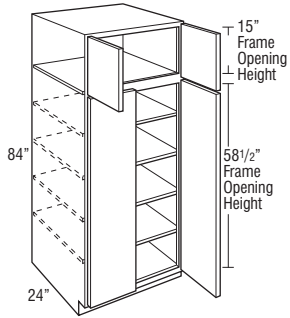
30" WIDE UTILITY DOUBLE DOOR

84" High

24" Deep

Model	Cubic Feet	1	2	3
U308424	43.0	•	1271	•

- Roll tray kits available.
- Not available in Omni Bark.



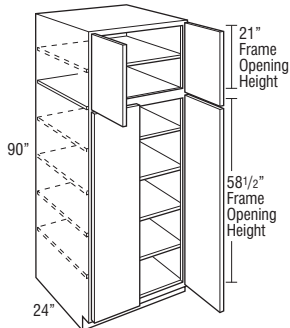
30" WIDE UTILITY DOUBLE DOOR

90" High

24" Deep

Model	Cubic Feet	1	2	3
U309024	46.0	•	1427	•

- Roll tray kits available.
- Not available in Omni Bark.



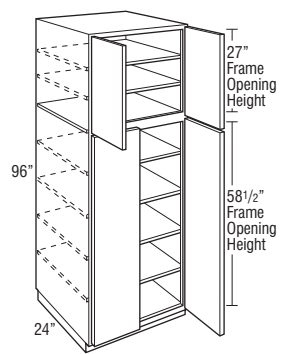
30" WIDE UTILITY DOUBLE DOOR

96" High

24" Deep

Model	Cubic Feet	1	2	3
U309624	49.0	•	1604	•

- Separate pedestal base included on 96" tall.
- Roll tray kits available.
- Not available in Omni Bark.



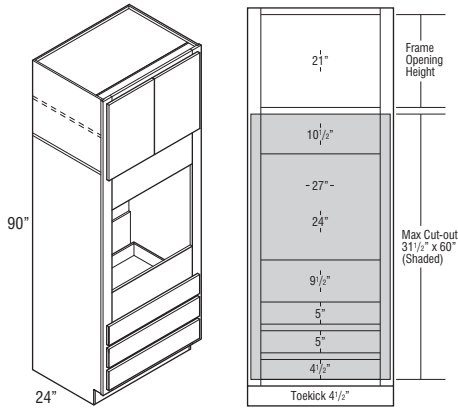
33" WIDE SINGLE OVEN 3 DRAWERS

90" High

24" Deep

Model	Cubic Feet	1	2	3
OC3D339024	51.0	1399	1645 [▲]	1892

- Oven cabinets feature an open back in cut-out area designed to improve field appliance installation.
 - Metal appliance support brackets included for 24" deep cabinets.
 - Confirm a heat shield is built into your appliance by the manufacturer.
- ▲Omni Bark available while supplies last.



33" WIDE SINGLE OVEN 3 DRAWERS

96" High

24" Deep

Model	Cubic Feet	1	2	3
OC3D339624	54.3	1575	1855 [▲]	2134

- Oven cabinets feature an open back in cut-out area designed to improve field appliance installation.
 - Metal appliance support brackets included for 24" deep cabinets.
 - Separate pedestal base included on 96" tall.
 - Confirm a heat shield is built into your appliance by the manufacturer.
- ▲Omni Bark available while supplies last.

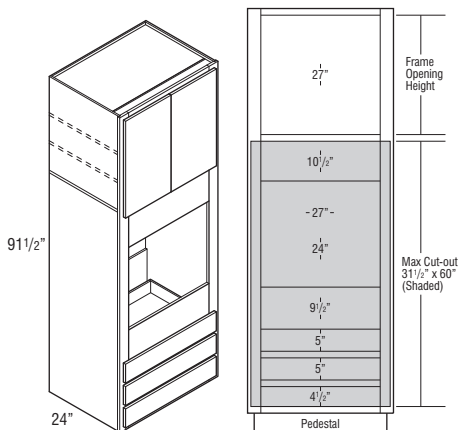
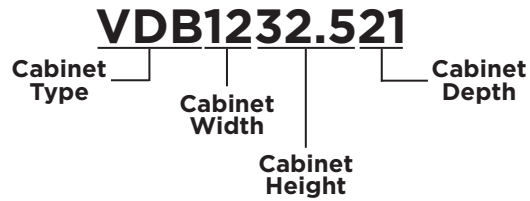


TABLE OF CONTENTS - VANITY CABINETS



32 1/2" High, 21" Deep

Vanity Base with Drawer66
Vanity Drawer Base66
Vanity Sink Base67

34 1/2" High, 21" Deep

Vanity Base with Drawer67
Vanity Drawer Base68
Vanity Sink Base68
Vanity Sink Drawer Base69

VANITY BASE SINGLE DOOR

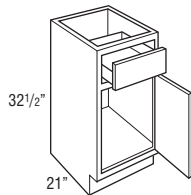
32½" High

21" Deep

Model	Cubic Feet	1	2	3
VB1232.521R†	5.7	•	336	•
VB1532.521R†	7.1	•	355	•
VB1832.521R†	8.4	•	384	•

- Cabinet hinged on the right; door may be flipped for left hinge application.
- Not available in Omni Bark, Omni Graphite, and Omni Mineral.

†SKU size available while supplies last.



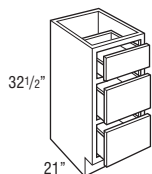
VANITY DRAWER BASE

32½" High

21" Deep

Model	Cubic Feet	1	2	3
VDB1232.521	5.7	397	466▲	534
VDB1532.521	7.1	435	512▲	590
VDB1832.521	8.4	475	556▲	641

- On door styles with slab drawer fronts, all drawer fronts will be slab.
- ▲Omni Bark available while supplies last.



VANITY SINK BASE

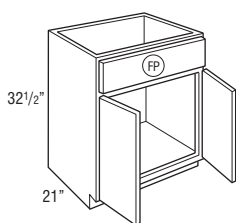
32½" High

21" Deep

Model	Cubic Feet	1	2	3
VSB2432.521	11.0	317	375 [▲]	431
VSB3032.521	13.7	353	416 [▲]	481
VSB3632.521	16.3	409	481 [▲]	552

• Tilt-out tray kits available.

▲Omni Bark available while supplies last.



VANITY BASE SINGLE DOOR

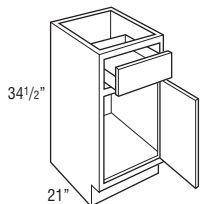
34½" High

21" Deep

Model	Cubic Feet	1	2	3
VB153421R	7.6	303	355 [▲]	409
VB183421R	9.0	330	384 [▲]	444

• Cabinet hinged on the right; door may be flipped for left hinge application.

▲Omni Bark available while supplies last.



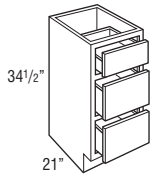
VANITY DRAWER BASE

34½" High

21" Deep

Model	Cubic Feet	1	2	3
VDB123421	6.2	397	466 [▲]	534
VDB153421	7.6	435	512 [▲]	590
VDB183421	8.9	475	556 [▲]	641

- On door styles with slab drawer fronts, all drawer fronts will be slab.
- ▲Omni Bark available while supplies last.



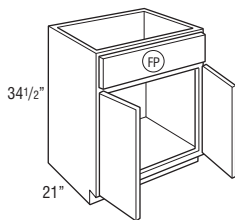
VANITY SINK BASE

34½" High

21" Deep

Model	Cubic Feet	1	2	3
VSB243421	11.9	317	375 [▲]	431
VSB303421	14.7	353	416 [▲]	481
VSB363421	17.5	409	481 [▲]	552

- Tilt-out tray kits available.
- ▲Omni Bark available while supplies last.



VANITY SINK DRAWER BASE

34 1/2" High

21" Deep

Model	Cubic Feet	1	2	3
2VSD363421	17.4	542	639 [▲]	733
2VSD423421	20.3	590	694 [▲]	798
2VSD483421CS	23.1	645	761 [▲]	875

▲Omni Bark available while supplies last.

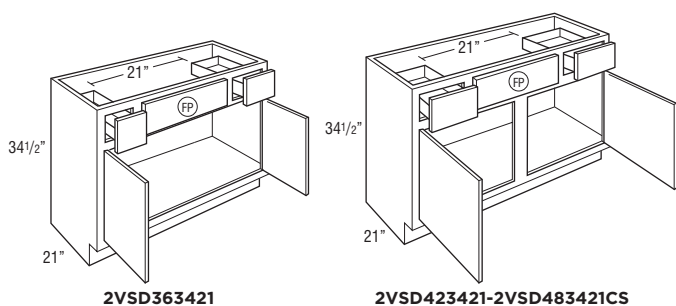


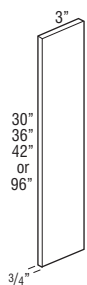
TABLE OF CONTENTS - FILLERS, SKINS, PANELS, & MOULDING

Fillers71
Skins73
Panels75
Crown Moulding78
Starter Moulding80
Accent Moulding80
Corner Moulding82
Toeboard83
Straight Valance / Baseboard84

3" FILLER

Model	Cubic Feet	Price
F330	0.2	41
F336	0.2	46
F342	0.2	51
TF396FH	0.5	116

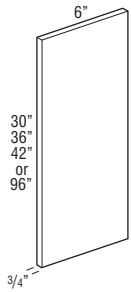
- 3/4" thick.
- Finished on front and two long edges (backs are not finished).



6" FILLER

Model	Cubic Feet	Price
F630	0.2	77
F636	0.2	84
F642	0.2	95
TF696FH	0.5	184

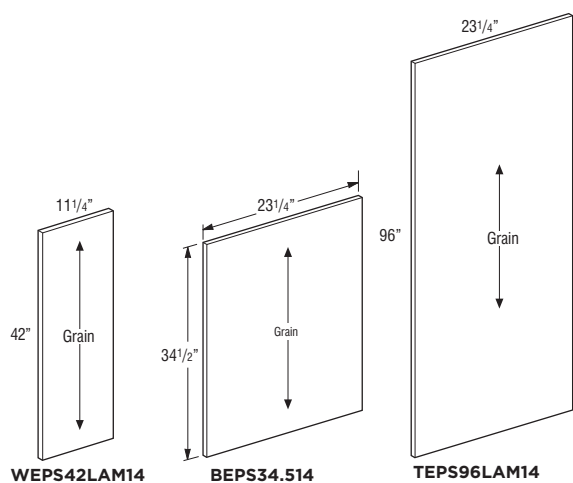
- 3/4" thick.
- Finished on front and two long edges (backs are not finished).



END PANEL SKINS

Model	Cubic Feet	Price
WEPS42LAM14	0.5	81
BEPS34.514	0.7	74
TEPS96LAM14	2.7	142

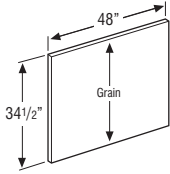
• 1/4" thick laminated furniture board.



FINISHED BACK SKINS

Model	Cubic Feet	Price
BP4834.514	1.1	84

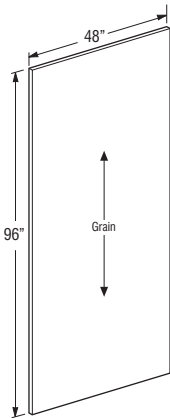
- 1/4" thick laminated furniture board.
- Grain runs with 34.5".



FINISHED BACK SKINS

Model	Cubic Feet	Price
BP4896LAM14	2.7	184

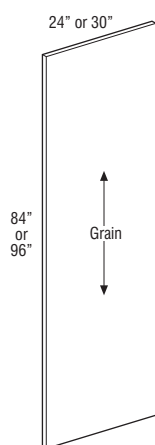
- 1/4" thick laminated furniture board.
- Grain runs with 96".



TALL END PANEL

Model	Cubic Feet	Price
TEP2484LAM	1.3	202
TEP2496LAM	1.3	242
TEP3096LAM	1.3	303

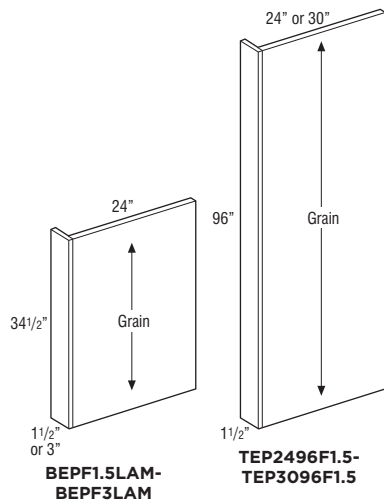
- 3/4" thick laminated furniture board.
- Panels are edgebanded on front edge.



BASE AND TALL PANELS WITH FILLER ATTACHED

Model	Cubic Feet	Price
BEPF1.5LAM	1.7	108
BEPF3LAM	1.7	131
TEP2496F1.5	1.3	279
TEP3096F1.5	1.3	419

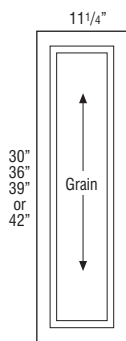
- 1/2" thick laminated furniture board.
- All panels have Natural Maple laminate interior.



WALL END DECORATIVE DOOR PANEL KIT

Model	Cubic Feet	1	2	3
WED1230	0.8	•	143	165
WED1236	0.9	•	164	190
WED1239	1.0	•	176	202
WED1242	1.1	•	188	216

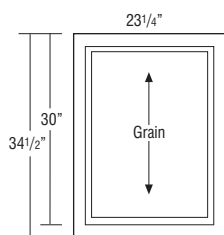
• Not available in Omni Bark.



BASE END DECORATIVE DOOR PANEL KIT

Model	Cubic Feet	1	2	3
BEDSD	1.6	•	216	246

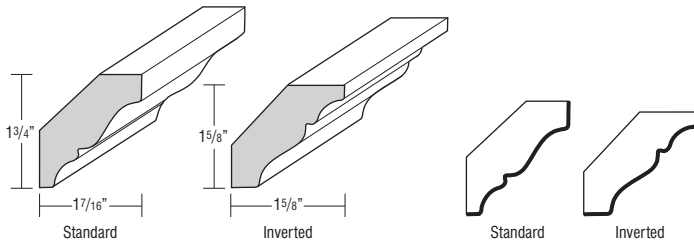
• Not available in Omni Bark.



CROWN MOULDING, SOLID WOOD CROWN

Model	Cubic Feet	Price
SWCRM8	0.5	103

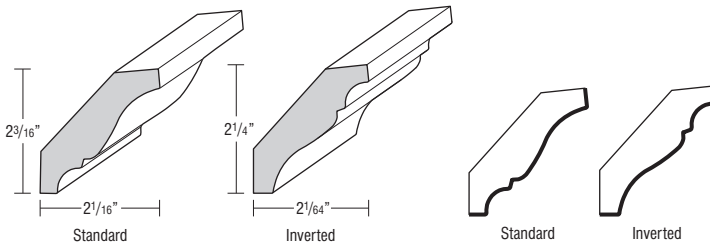
- Face mounts on Partial Overlay doors.
- May be face mounted on Full Overlay if used with a cleat.
- One 8' section.
- Moulding can be used as standard or inverted.
- Finished edges indicated by bold lines on side view drawings.



CROWN MOULDING, SOLID WOOD LARGE CROWN

Model	Cubic Feet	Price
SWLCRM8	0.5	133

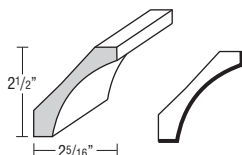
- Face mounts on Partial Overlay doors.
- May be face mounted on Full Overlay if used with a cleat.
- One 8' section.
- Moulding can be used as standard or inverted.
- Finished edges indicated by bold lines on side view drawings.



CROWN MOULDING, SMALL COVE CROWN

Model	Cubic Feet	Price
SMCOVECROWN8	1.0	167

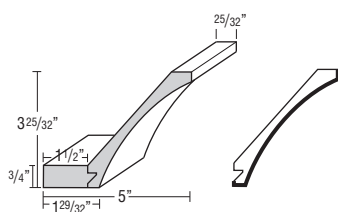
- One 8' section.
- Finished edges indicated by bold lines on side view drawings.



CROWN MOULDING, COVE CROWN

Model	Cubic Feet	Price
COVECROWN8	1.0	207

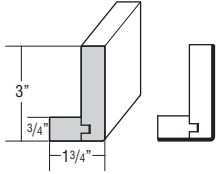
- One 8' section.
- Cleat shipped unattached can be used for top mount or face frame applications.
- Finished edges indicated by bold lines on side view drawings.



STARTER MOULDING, SHAKER

Model	Cubic Feet	Price
STRS8	1.0	322

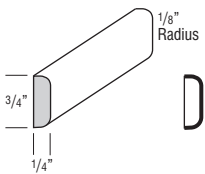
- One 8' section.
- Finished edges indicated by bold lines on side view drawings.



ACCENT MOULDING, FLAT SCRIBE

Model	Cubic Feet	Price
SM8	0.5	41

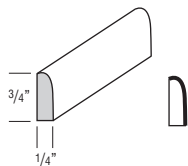
- One 8' section.
- Finished edges indicated by bold lines on side view drawings.



ACCENT MOULDING, SMALL SCRIBE

Model	Cubic Feet	Price
SSM8	0.5	41

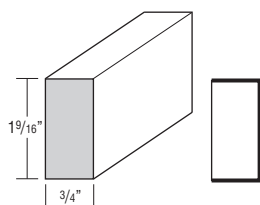
- One 8' section.
- Finished edges indicated by bold lines on side view drawings.



ACCENT MOULDING, LIGHT BAFFLE

Model	Cubic Feet	Price
LB2	0.5	74

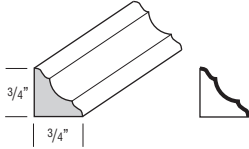
- One 8' section.
- Finished edges indicated by bold lines on side view drawings.



CORNER MOULDING, INSIDE CORNER

Model	Cubic Feet	Price
ICM8	0.5	59

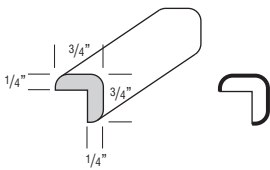
- One 8' section.
- Finished edges indicated by bold lines on side view drawings.



CORNER MOULDING, OUTSIDE CORNER

Model	Cubic Feet	Price
OCM8	0.5	59

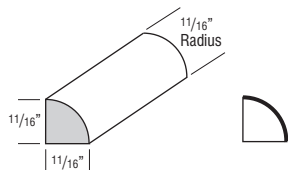
- One 8' section.



CORNER MOULDING, QUARTER ROUND

Model	Cubic Feet	Price
QRM	0.5	62

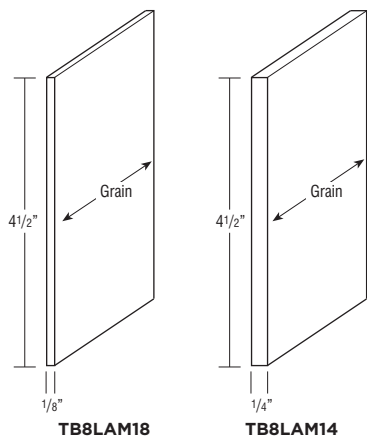
- One 8' section.
- Finished edges indicated by bold lines on side view drawings.



TOEBOARD

Model	Cubic Feet	Price
TB8LAM18	0.1	34
TB8LAM14	0.1	41

- One 8' section.
- TB8LAM18: 1/8" laminated furniture board.
- TB8LAM14: 1/4" laminated furniture board.



STRAIGHT VALANCE / BASEBOARD

Model	Cubic Feet	Price
VV48	0.4	72
VV96	0.4	142

- Trimmable.
- Profiled bottom edge 3/4" thick.

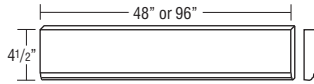


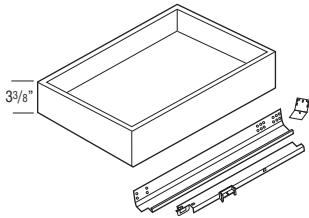
TABLE OF CONTENTS - ACCESSORIES AND HINGES

Roll Tray Kits86
Tilt-out Trays87
Bumper Pads87
Drawer Guide Kits88
Stain, Paint, & Touch-up Tools89
Hinges90

ROLL TRAY KITS

Model	Cubic Feet	Price
RT15WD	0.5	119
RT18WD	0.8	124
RT21WD	0.9	128
RT24WD	1.0	133
RT27WD	1.4	138
RT30WD	1.4	142
RT33WD	1.6	149
RT36WD	1.6	154
RT42WD	1.8	254

- 5/8" solid-wood dovetail roll tray with soft-closing, undermount, full extension guides.
- RT15WD-RT36WD kits contain 1 roll tray, roll tray brackets, hardware, and screws.
- RT42WD kits contain 2 roll trays, roll tray brackets, hardware, and screws.
- Exterior dimensions of roll trays are 21" deep x 3 3/8" tall (fits standard 24" deep cabinet).

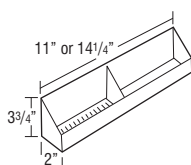


Width	Application
15"	B15, B15FH, B1532.5
18"	B18, B18FH, B1832.5, U18
21"	B21, B2132.5, B21FH
24"	B24, B24FH, B2432.5, U24
27"	B27, B2732.5
30"	B30, B30FHB, B3032.5
33"	B33, B3332.5
36"	B36, B36FH, B3632.5
42"	B42, B4232.5

TILT-OUT TRAYS

Model	Cubic Feet	Price
TOT15	0.1	77
TOT18	0.2	77

- TOT15: 11" w X 2" d X 3 3/4"
- TOT18: 14 1/4" w X 2" d X 3 3/4"
- Kit includes two white plastic trays and one pair of tilt-out hinges that attaches to the inside of the false panel.
- One tilt-out tray per false panel on cabinets less than 30" wide and greater than 36" wide, two tilt-out trays attached to one false panel on 30"-36" wide cabinets.



Cab Width	TOT Size	Cabinets
24"	TOT18	SB24, SB2432.5, VSB2432.521, VSB243421
27"	TOT18	SB27, SB2732.5
30"	TOT15	SB30, SB3032.5, VSB3032.521, VSB303421
33"	TOT15	SB33, SB3332.5
36"	TOT18	SB36, SB3632.5, VSB3632.521, VSB363421
42"	TOT18	SB42, SB4232.5
48"	TOT18	SB48CS, SB4832.5CS

BUMPER PADS

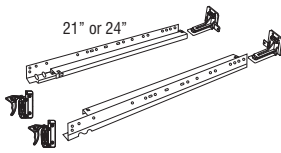
Model	Cubic Feet	Price
BUMPERPADS	0.5	9

- Package of 25.

DRAWER GUIDE KITS

Model	Cubic Feet	Price
DGK21PG	0.5	131
DGK24PG	0.5	135

- Undermount full extension, soft-close guide.
- Kit includes guide hardware for one drawer box (cabinets and drawer members, sockets and screws).
- Dimension refers to cabinet depth.



STAIN & PAINT

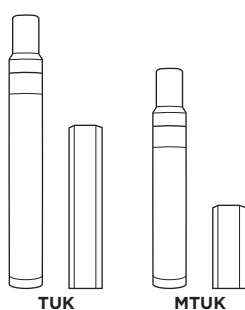
Model	Cubic Feet	Price
QUARTCOLOR	0.1	116
SSC	0.1	43
SSCCLEAR	0.1	43

- Wiping stain can be sprayed at low pressure.
- SSC is a 384 mL aerosol can available in Paint colors.
- SSCCLEAR is a 384 mL aerosol can in clear.

TOUCH-UP KIT

Model	Cubic Feet	Price
TUK	0.1	61
MTUK	0.1	36

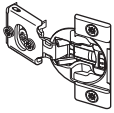
- TUK includes touch-up marker and a fill stick.
- MTUK includes small touch-up marker and a small fill stick.



PARTIAL OVERLAY HINGE

Model	Cubic Feet	Price
38NPOHINGE	0.5	22

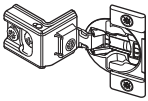
- Partial Overlay Hinge, 6-way adjustable with integrated soft-close.
- Sold in pairs.
- 1/2" partial overlay 107° hinge.
- For use on Partial Overlay Styles, Full Overlay Diagonal Wall Cabinets and Angled Corner Sink Fronts.



FULL OVERLAY HINGE

Model	Cubic Feet	Price
38CFOHINGE	0.5	22

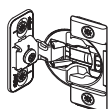
- Full Overlay 107° Hinge, 6-way adjustable with integrated soft-close.
- Sold in pairs.



FULL OVERLAY HINGE

Model	Cubic Feet	Price
38BFOVHINGE	0.5	22

- Full Overlay face mount 107° Hinge, 4-way adjustable with integrated soft-close.
- Sold in pairs.
- For use on OC3D cabinets.



HINGE ANGLE RESTRICTION CLIP

Model	Cubic Feet	Price
HINGERESCLIP	0.1	9

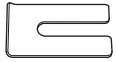
- For use in applications with cabinets installed at varying depths to prevent the door damage caused by opening into an adjacent cabinet.
- Restricts hinges to 86° opening capability.
- Works only with the 38NPOHINGE and 38CFOHINGE.
- Not recommended for cabinets with roll trays installed in partial overlay styles.
- Sold in pairs.



HINGE SHIM

Model	Cubic Feet	Price
HINGESHIM5	0.1	9

- Install between the face frame and hinge to allow additional adjustment of doors.
- Can be used to reduce gap between butt doors.
- Pack of 5 metal shims.
- Compatible with all hinges except face-mount.



MANTRA™



Mantra cabinets have a five year limited warranty. For terms & conditions, please visit [mantracabinets.com/warranty](https://www.mantracabinets.com/warranty).
Cabinet Care and Cleaning Instructions: <https://www.masterbrand.com/care-and-cleaning>
Styles, product availability and construction may vary slightly from those shown due to material availability and/or design evolution. Specifications are subject to change without notice. Our customer service team is available if your design requires verification of product availability and specifications.



Part of the
MasterBrand™
Family

[mantracabinets.com](https://www.mantracabinets.com)

#MantraCabinets

© 2022 MasterBrand Cabinets, Inc. All rights reserved